

8912 Whiteclover Street

LITTLETON, CO 80125



PRICE

\$827,260

PLAN

Plan 2

LOCATION

Harmony at Sterling Ranch

FEATURES

-  4 Bedrooms
-  3.0 Bathrooms
-  3,036 Sq. Ft.
-  2 Car Garage

Plan 2 of the Harmony Collection at Sterling Ranch is a stunning single-story home that offers approximately 1,906 sq. ft. of living space on the main floor and an additional 1,130 sq. ft. on the finished walkout basement level. The main level includes 3 bedrooms and 2 bathrooms. As you enter through the covered porch you find two private bedrooms with a full bath located in between. Head past the open stairway into the main living area, and you'll find the open kitchen, dining, and large great room with a 42" fireplace. The kitchen features a center island and walk-in pantry, and seamlessly leads from the great room to the Colorado outdoor room.

The main floor also includes the primary suite with spa-like bathroom with dual sinks and large walk-in closet, the laundry room, and a drop zone off the garage. The finished walkout basement includes a media room and additional bedroom and full bath.

Interior finishes on this home include white cabinets, white sand Quartz countertops, medium-toned engineered wide plank flooring, and stainless-steel appliances. The home also comes with air conditioning, a tankless water heater, gas line to range and much more!

8912 Whiteclover Street

LITTLETON, CO 80125

PLAN 2: 1906 MAIN FLOOR

HARMONY
COLLECTION

PLAN 2

3 Bedrooms · 2 Baths · 2-Car Garage
Approx. 1,906 Finished Sq. Ft.



STERLING RANCH™
COLORADO

PRELIMINARY



Preliminary and subject to change. 720.802.6221 | SterlingRanchSales@trumarkco.com | 7046 Watercress Drive, Littleton CO | VIP-STERLINGRANCH.COM

TRUMARKHOMES All information is for reference only. Prices, taxes and specifications subject to change and should be verified by all potential homebuyers. This is not an offer to sell but is intended for information only. The developer reserves the right to make modifications in materials, specifications, plans, pricing, various fees, designs, scheduling and delivery of homes without prior notice. All dimensions and square footages are approximate. Plan and dimensions may contain minor variations from floor to floor. CA DRE license no. 01877720.



8912 Whiteclover Street

LITTLETON, CO 80125

PLAN 2: 1906 OPTIONS

HARMONY COLLECTION

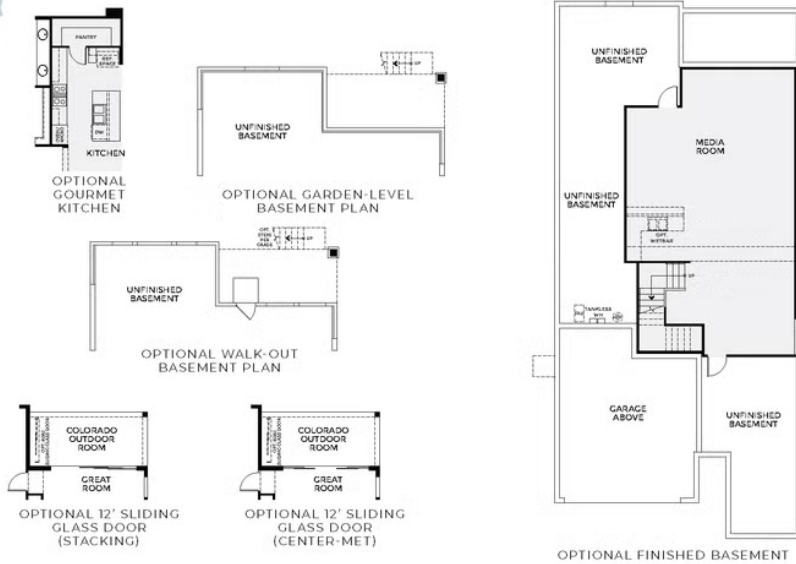
PLAN 2 - OPTIONS

3 Bedrooms · 2 Baths · 2-Car Garage
Approx. 1,906 Finished Sq. Ft.



STERLING RANCH™
COLORADO

PRELIMINARY



Preliminary and subject to change 720.802.6221 | SterlingRanchSales@trumarkco.com | 7046 Watercress Drive, Littleton CO | VIP-STERLINGRANCH.COM

TRUMARKHOMES All information is for reference only. Prices, taxes and specifications subject to change and should be verified by all potential homebuyers. This is not an offer to sell but is intended for information only. The developer reserves the right to make modifications in materials, specifications, plans, pricing, various fees, designs, scheduling and delivery of homes without prior notice. All dimensions and square footages are approximate. Plan and dimensions may contain minor variations from floor to floor. CA DRE license no. 01877720.



8912 Whiteclover Street

LITTLETON, CO 80125

PLAN 2: 1906 OPTIONAL FINISHED BASEMENT

HARMONY
COLLECTION

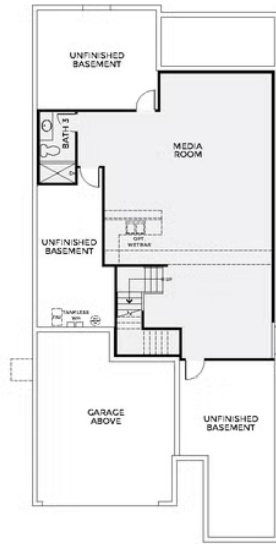
PLAN 2 - OPTIONS

3 Bedrooms · 2 Baths · 2-Car Garage
Approx. 1,906 Finished Sq. Ft.

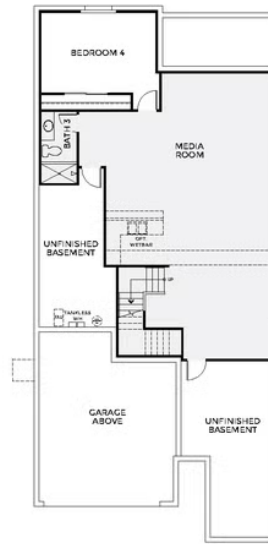


STERLING RANCH™
COLORADO

PRELIMINARY



OPTIONAL FINISHED BASEMENT 2



OPTIONAL FINISHED BASEMENT 3

Preliminary and subject to change. 720.802.6221 | SterlingRanchSales@trumarkco.com | 7046 Watercress Drive, Littleton CO | VIP-STERLINGRANCH.COM

TRUMARKHOMES All information is for reference only. Prices, taxes and specifications subject to change and should be verified by all potential homebuyers. This is not an offer to sell but is intended for information only. The developer reserves the right to make modifications in materials, specifications, plans, pricing, various fees, designs, scheduling and delivery of homes without prior notice. All dimensions and square footages are approximate. Plan and dimensions may contain minor variations from floor to floor. CA DRE license no. 01877720.

