

# Plan 2

HARMONY AT STERLING RANCH



PRICE  
**\$699,900**

## FEATURES

-  3 Bedrooms
-  2 Bathrooms
-  1,906 Sq. Ft.
-  2 Car Garage

Plan 2 of the Harmony Collection at Sterling Ranch is a stunning single-story home that offers approximately 1,906 sq. ft. of living space with 3 bedrooms and 2 bathrooms. As you enter through the covered porch you find two private bedrooms with a full bath located in between. Head past the open stairway to the full unfinished basement into the main living area, and you'll find the open kitchen, dining, and large great room with a 42" fireplace. The kitchen features a center island and walk-in pantry, and seamlessly leads from the great room to the Colorado outdoor room.

The main floor also includes the primary suite with spa-like bathroom with dual sinks and large walk-in closet, the laundry room, and a drop zone off the garage. The full unfinished basement allows for options to finish adding a media room and an additional bedroom, bath and a wet bar.

Standard interior finishes of this home include white cabinets, Quartz countertops, medium-toned engineered flooring, and stainless-steel appliances, or you can select to upgrade your interior finishes to match your own style. The home also comes with extended engineered plank flooring, a tankless water heater, gas line to range, AC and much more!



# Plan 2

HARMONY AT STERLING RANCH

## PLAN 2: 1906 MAIN FLOOR

# HARMONY COLLECTION

### PLAN 2

3 Bedrooms · 2 Baths · 2-Car Garage  
Approx. 1,906 Finished Sq. Ft.



STERLING RANCH™  
COLORADO

PRELIMINARY



Preliminary and subject to change. 720.802.6221 | SterlingRanchSales@trumarkco.com | 7046 Watercress Drive, Littleton CO | VIP-STERLINGRANCH.COM

TRUMARKHOMES

All information is for reference only. Prices, taxes and specifications subject to change and should be verified by all potential homebuyers. This is not an offer to sell but is intended for information only. The developer reserves the right to make modifications in materials, specifications, plans, pricing, various fees, designs, scheduling and delivery of homes without prior notice. All dimensions and square footages are approximate. Plan and dimensions may contain minor variations from floor to floor. CA DRE license no. 01877720.



# Plan 2

HARMONY AT STERLING RANCH

## PLAN 2: 1906 OPTIONS

# HARMONY COLLECTION

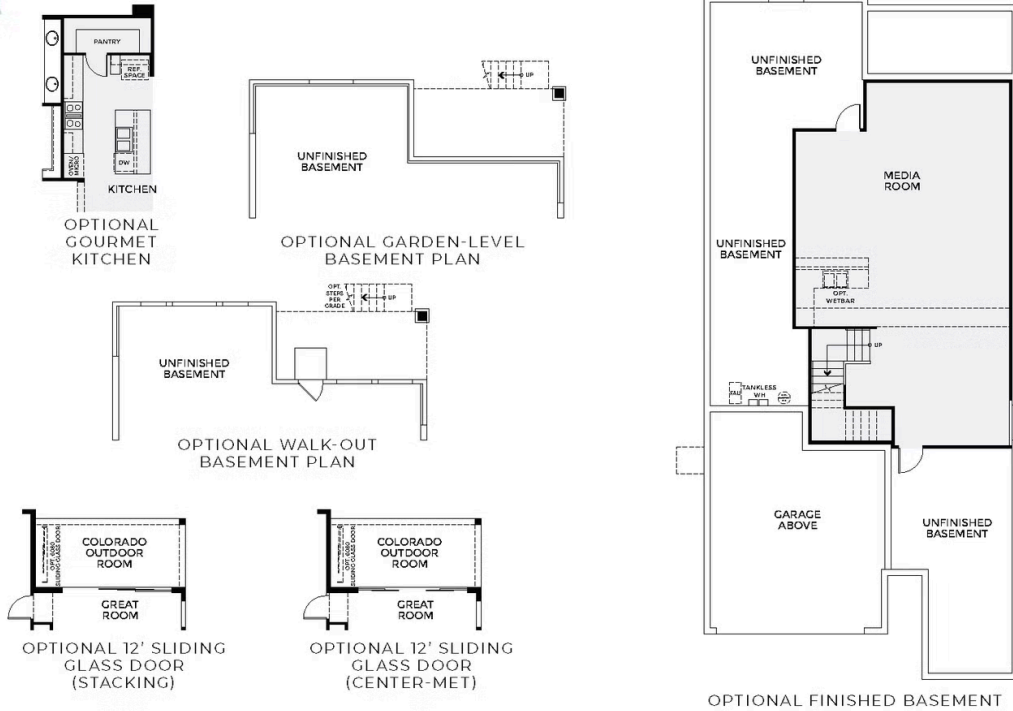
## PLAN 2 - OPTIONS

3 Bedrooms · 2 Baths · 2-Car Garage  
Approx. 1,906 Finished Sq. Ft.



STERLING RANCH™  
COLORADO

PRELIMINARY



Preliminary and subject to change. 720.802.6221 | SterlingRanchSales@trumarkco.com | 7046 Watercress Drive, Littleton CO | VIP-STERLINGRANCH.COM

TRUMARKHOMES

All information is for reference only. Prices, taxes and specifications subject to change and should be verified by all potential homebuyers. This is not an offer to sell but is intended for information only. The developer reserves the right to make modifications in materials, specifications, plans, pricing, various fees, designs, scheduling and delivery of homes without prior notice. All dimensions and square footages are approximate. Plan and dimensions may contain minor variations from floor to floor. CA DRE license no. 01877720



# Plan 2

HARMONY AT STERLING RANCH

## PLAN 2: 1906 OPTIONAL FINISHED BASEMENT

# HARMONY COLLECTION

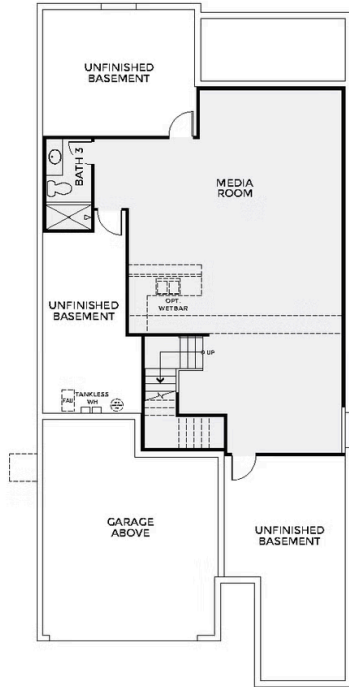
### PLAN 2 - OPTIONS

3 Bedrooms · 2 Baths · 2-Car Garage  
Approx. 1,906 Finished Sq. Ft.

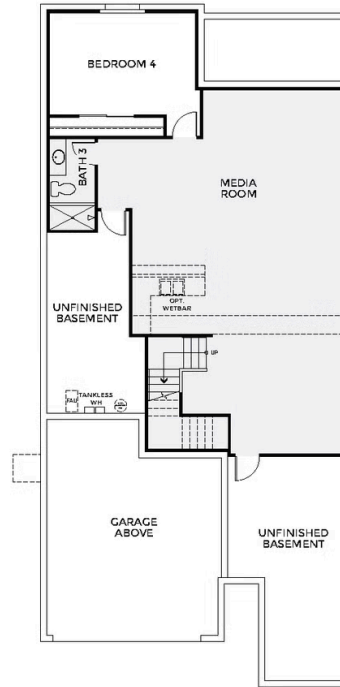


STERLING RANCH™  
COLORADO

PRELIMINARY



OPTIONAL FINISHED BASEMENT 2



OPTIONAL FINISHED BASEMENT 3

Preliminary and subject to change. 720.802.6221 | SterlingRanchSales@trumarkco.com | 7046 Watercress Drive, Littleton CO | VIP-STERLINGRANCH.COM

TRUMARKHOMES

All information is for reference only. Prices, taxes and specifications subject to change and should be verified by all potential homebuyers. This is not an offer to sell but is intended for information only. The developer reserves the right to make modifications in materials, specifications, plans, pricing, various fees, designs, scheduling and delivery of homes without prior notice. All dimensions and square footages are approximate. Plan and dimensions may contain minor variations from floor to floor. CA DRE license no. 01877720.

