

8672 Whiteclover Street

LITTLETON, CO 80125



PRICE

\$749,900

PLAN

Plan 1

LOCATION

Harmony at Sterling Ranch

FEATURES

 4 Bedrooms

 3 Ba

 2,675 Sq. Ft.

 2 Car Garage

Welcome to homesite 226 of the Harmony Collection at Sterling Ranch. A spacious ranch home with approximately 2,675 finished sq. ft. of living space. This thoughtfully designed floorplan includes an open design layout, a gourmet kitchen, 42" fireplace in the great room, and in-ground finished basement with a media room and additional bedroom and bathroom. With the Diana II design finish package, the home showcases modern elegance through features such as luxurious wood-look LVP flooring, a tankless water heater for on-demand comfort, a gas line to the range for culinary ease, and central air conditioning for year-round climate control. Designed in the Mid-Century Modern Ranch elevation style, the home includes three well-sized bedrooms, three bathrooms, and a finished basement with large media room. At the heart of the home is a generous kitchen outfitted with white cabinetry, sleek quartz countertops, and stainless steel appliances. Just off the great room, a covered outdoor room offers a comfortable space to enjoy Colorado's natural beauty in any season. This is where modern living and lifestyle come together in perfect harmony.

8672 Whiteclover Street

LITTLETON, CO 80125

PLAN 1: 1638 OPTIONS

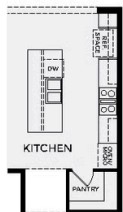
HARMONY COLLECTION

PLAN 1 - OPTIONS

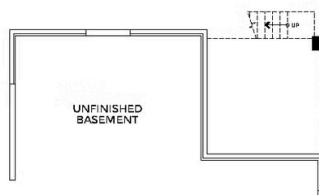
3 Bedrooms • 2 Baths • 2-Car Tandem Garage
Approx. 1,638 Finished Sq. Ft.



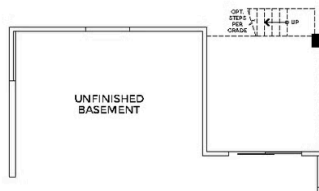
STERLING RANCH™
COLORADO



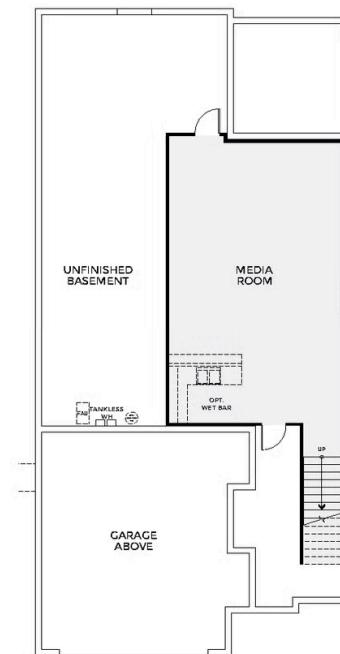
OPTIONAL
GOURMET
KITCHEN



OPTIONAL GARDEN-LEVEL
BASEMENT PLAN



OPTIONAL WALK-OUT
BASEMENT PLAN



OPTIONAL FINISHED BASEMENT

Preliminary and subject to change.

720.802.6221 | SterlingRanchSales@trumarkco.com | 7046 Watercress Drive, Littleton CO | VIP-STERLINGRANCH.COM

TRUMARKHOMES

All information is for reference only. Prices, taxes and specifications subject to change and should be verified by all potential homebuyers. This is not an offer to sell but is intended for information only. The developer reserves the right to make modifications in materials, specifications, plans, pricing, various fees, designs, scheduling and delivery of homes without prior notice. All dimensions and square footages are approximate. Plan and dimensions may contain minor variations from floor to floor. CA DRE license no. 01877720. 🏠

PLAN 1: 1638 MAIN LEVE

HARMONY
COLLECTION

PLAN 1

3 Bedrooms • 2 Baths • 2-Car Garage
Approx. 1,638 Finished Sq. Ft.



STERLING RANCH™
COLORADO



Preliminary and subject to change. 720.802.6221 | SterlingRanchSales@trumarkco.com | 7046 Watercress Drive, Littleton CO | VIP-STERLINGRANCH.COM

TRUMARKHOMES

All information is for reference only. Prices, taxes and specifications subject to change and should be verified by all potential homebuyers. This is not an offer to sell but is intended for information only. The developer reserves the right to make modifications in materials, specifications, plans, pricing, various fees, designs, scheduling and delivery of homes without prior notice. All dimensions and square footages are approximate. Plan and dimensions may contain minor variations from floor to floor. CA DRE license no. 01877720. 🏠

PLAN 1: 1638 OPTIONAL FINISHED BASEMENT

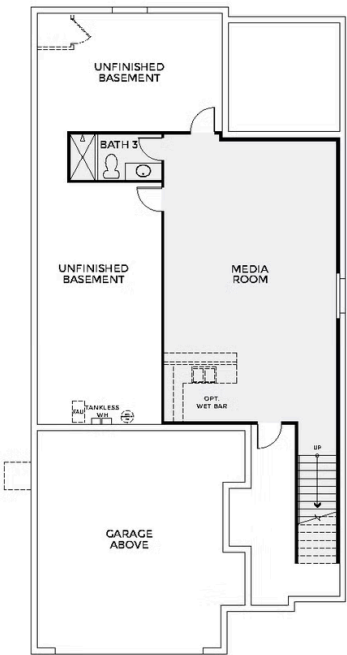
HARMONY
COLLECTION

PLAN 1 - OPTIONS

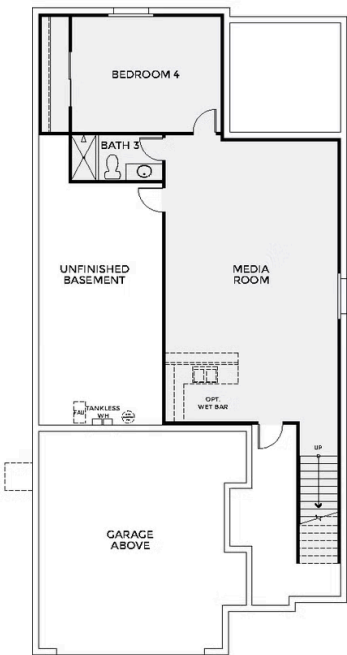
3 Bedrooms • 2 Baths • 2-Car Garage
Approx. 1,638 Finished Sq. Ft.



STERLING RANCH™
COLORADO



OPTIONAL FINISHED BASEMENT 2



OPTIONAL FINISHED BASEMENT 3

Preliminary and subject to change.

720.802.6221 | SterlingRanchSales@trumarkco.com | 7046 Watercress Drive, Littleton CO | VIP-STERLINGRANCH.COM

TRUMARKHOMES

All information is for reference only. Prices, taxes and specifications subject to change and should be verified by all potential homebuyers. This is not an offer to sell but is intended for information only. The developer reserves the right to make modifications in materials, specifications, plans, pricing, various fees, designs, scheduling and delivery of homes without prior notice. All dimensions and square footages are approximate. Plan and dimensions may contain minor variations from floor to floor. CA DRE license no. 01877720. 🏠