

# 8735 Whiteclover Street

LITTLETON, CO 80125



PRICE  
**\$614,900**

PLAN  
Plan 2

LOCATION  
Duet at Sterling Ranch

## FEATURES

-  3 Bedrooms
-  2 Ba, 1 Half Ba
-  1,820 Sq. Ft.
-  2 Car Garage

Welcome to homesite 108 of the Duet Collection at Sterling Ranch, a spacious Plan 2 duplex offering approximately 1,882 finished sq. ft. of thoughtfully designed living space. The floorplan features a large dining room, a covered outdoor room, and an in-ground unfinished basement. Modern living comes together with a professionally designed finish package that includes LVP wood-like flooring, a tankless water heater, a gas line to the range, AC, and more. This Colorado Farmhouse-style home offers 3 bedrooms and 2.5 bathrooms, a main floor pocket office, an upstairs loft, an unfinished basement with rough-in plumbing for a future bath, a kitchen with white cabinets and quartz countertops, KitchenAid appliances including a gas range and vented microwave, KitchenAid refrigerator, GE top load washer/dryer, a covered outdoor room off the dining area, and a 2-car garage with an 8' door, all situated along open space and near a pocket park.



# 8735 Whiteclover Street


LITTLETON, CO 80125

## DUETS AT STERLING RANCH BY TRUMARK HOMES | PLAN 2

### DUETS COLLECTION

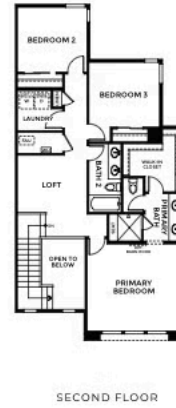
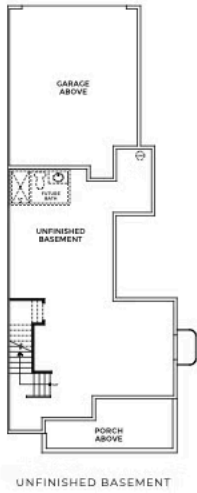
### RESIDENCE 2

3 Bedrooms · 2.5 Baths · Loft · 2-Car Garage  
Approx. 1,882 Sq. Ft.



**STERLING RANCH™**  
COLORADO

PRELIMINARY



Preliminary and subject to change. 720.802.6221 | SterlingRanchSales@trumarkco.com | 7046 Watercress Drive, Littleton CO | VIP-STERLINGRANCH.COM

TRUMARKHOMES All information is for reference only. Prices, taxes and specifications subject to change and should be verified by all potential homebuyers. This is not an offer to sell but is intended for information only. The developer reserves the right to make modifications in materials, specifications, plans, pricing, various fees, designs, scheduling and delivery of homes without prior notice. All dimensions and square footages are approximate. Plan and dimensions may contain minor variations from floor to floor. Updated 05/30/2024. ©

# 8735 Whiteclover Street

LITTLETON, CO 80125

## DUETS AT STERLING RANCH BY TRUMARK HOMES | PLAN 2

### DUETS COLLECTION

### RESIDENCE 2 - ELEVATIONS

3 Bedrooms · 2.5 Baths · Loft · 2-Car Garage  
Approx. 1,882 Sq. Ft.



**STERLING RANCH™**  
COLORADO

PRELIMINARY



FIRST FLOOR - HIGH COUNTRY RANCH

SECOND FLOOR - HIGH COUNTRY RANCH

Preliminary and subject to change. 720.802.6221 | SterlingRanchSales@trumarkco.com | 7046 Watercress Drive, Littleton CO | VIP-STERLINGRANCH.COM

TRUMARKHOMES All information is for reference only. Prices, rates and specifications subject to change and should be verified by all potential homebuyers. This is not an offer to sell but is intended for information only. The developer reserves the right to make modifications in materials, specifications, plans, pricing, various fees, designs, scheduling and delivery of homes without prior notice. All dimensions and square footages are approximate. Plan and dimensions may contain minor variations from floor to floor. Updated 05/30/2024. ©

# 8735 Whiteclover Street

LITTLETON, CO 80125

## DUETS AT STERLING RANCH BY TRUMARK HOMES | PLAN 2

### DUETS COLLECTION

### RESIDENCE 2 - ELEVATIONS

3 Bedrooms · 2.5 Baths · Loft · 2-Car Garage  
Approx. 1,882 Sq. Ft.



**STERLING RANCH™**  
COLORADO

PRELIMINARY



FIRST FLOOR - COLORADO PRAIRIE



SECOND FLOOR - COLORADO PRAIRIE

Preliminary and subject to change. 720.802.6221 | SterlingRanchSales@trumarkco.com | 7046 Watercress Drive, Littleton CO | VIP-STERLINGRANCH.COM

TRUMARKHOMES All information is for reference only. Prices, rates and specifications subject to change and should be verified by all potential homebuyers. This is not an offer to sell but is intended for information only. The developer reserves the right to make modifications in materials, specifications, plans, pricing, various fees, designs, scheduling and delivery of homes without prior notice. All dimensions and square footages are approximate. Plan and dimensions may contain minor variations from floor to floor. Updated 05/30/2024. ©

TRUMARK**HOMES**

# 8735 Whiteclover Street

LITTLETON, CO 80125

GET IN TOUCH  
(720) 704-1472

DUETS AT STERLING RANCH BY TRUMARK HOMES | PLAN 2



TRUMARK**HOMES**

# 8735 Whiteclover Street

LITTLETON, CO 80125

GET IN TOUCH  
(720) 704-1472

DUETS AT STERLING RANCH BY TRUMARK HOMES | PLAN 2

