

# 8896 Yellowcress Street

LITTLETON, CO 80125



## PRICE

**\$599,900**

## PLAN

Plan 1

## LOCATION

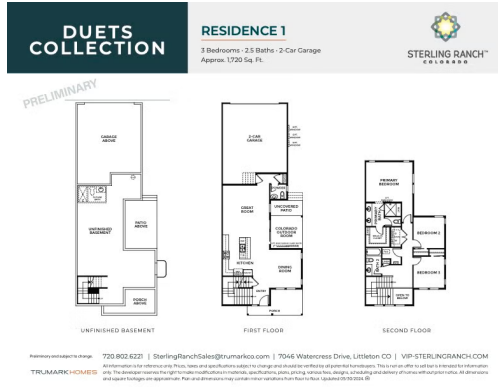
Duet at Sterling Ranch

## FEATURES

-  3 Bedrooms
-  2.5 Bathrooms
-  1,720 Sq. Ft.
-  2 Car Garage

Plan 1 of the Duet Collection at Sterling Ranch is a spacious duplex that offers approximately 1,720 sq. ft. of living space with 3 bedrooms and 2.5 bathrooms. Upon passing through the covered porch and entering the home, the entry hallway leads to a large kitchen with a center island overlooking the dining room. Additionally, the great room with a sliding glass door leads to the covered Colorado outdoor room and patio. Upstairs, the primary suite offers a luxurious ensuite bath with dual sinks, a spa-like shower, and a walk-in closet. The second floor also includes two additional bedrooms, a full bath, and laundry room. Interior finishes of this home include white cabinets, Quartz countertops, medium-toned engineered flooring, and stainless-steel appliances. Additionally, the home comes with air conditioning, a tankless water heater, gas line to range, and more!

## DUETS AT STERLING RANCH BY TRUMARK HOMES | PLAN 1

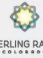


## DUETS AT STERLING RANCH BY TRUMARK HOMES | PLAN 1

**DUETS  
COLLECTION**


**RESIDENCE 1 - ELEVATIONS**

3 Bedrooms • 2.5 Baths • 2 Car Garage  
Approx. 1720 Sq. Ft.




STERLING RANCH  
COLORADO

PRELIMINARY



FIRST FLOOR - HIGH COUNTRY BANCH



SECOND FLOOR - HIGH COUNTRY BANCH

For more information please call: 720.802.8222 | SterlingRanchSales@trumarkco.com | 7046 Watercress Drive, Littleton, CO | VIP-STERLINGRANCH.COM  
 TRUMARK HOMES All information is for reference only. Plans, items and specifications subject to change and should be verified at proposed time of purchase. This is not an offer and will be reviewed for information only. The developer reserves the right to make modifications to marketing, architectural plans, pricing, features, design, construction and delivery without notice and without obligation. All information and square footage are approximate. Plans and dimensions may vary from those shown on this plan. Updated 09/2022. ©

# 8896 Yellowcress Street

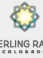
LITTLETON, CO 80125

## DUETS AT STERLING RANCH BY TRUMARK HOMES | PLAN 1

**DUETS  
COLLECTION**



**RESIDENCE 1 - ELEVATIONS**

3 Bedrooms • 2.5 Baths • 2 Car Garage  
Approx. 1720 Sq. Ft.



STERLING RANCH  
COLORADO

PRELIMINARY

FIRST FLOOR - HIGH COUNTRY RANCH

SECOND FLOOR - HIGH COUNTRY RANCH

Plan and elevations subject to change. 720.802.8222 | SterlingRanchSales@trumarkco.com | 7046 Watercress Drive, Littleton CO | VIP-STERLINGRANCH.COM  
 All dimensions are shown in feet, inches and millimeters subject to change and do not include all glass and metal. This is not an offer and will be reviewed for construction only. The development is subject to change and is not intended to be a final offer. All dimensions are shown in feet, inches and millimeters. All elevations and square footages are approximate. Plans and elevations may vary from those shown here. © 2020 TRUMARK HOMES

TRUMARK**HOMES**

# 8896 Yellowcress Street

LITTLETON, CO 80125

GET IN TOUCH  
(970) 499-8222

DUETS AT STERLING RANCH BY TRUMARK HOMES | PLAN 1



TRUMARK**HOMES**

# 8896 Yellowcress Street

LITTLETON, CO 80125

GET IN TOUCH  
(970) 499-8222

DUETS AT STERLING RANCH BY TRUMARK HOMES | PLAN 1

