

7329 Goldbloom Lane

LITTLETON, CO 80125



PRICE
\$574,900

PLAN
Plan 1

LOCATION
Duet at Sterling Ranch

FEATURES
🛏 3 Bedrooms
🚿 2 Ba, 1 Half Ba
📏 1,720 Sq. Ft.
🚗 2 Car Garage

Welcome to homesite 124 of the Duet Collection at Sterling Ranch, a spacious duplex home offering approximately 1,720 finished square feet of thoughtfully designed living space. This well-appointed floorplan features a large dining room, a covered outdoor room, and an in-ground unfinished basement with ample storage potential. Designed for modern living, the home includes a professionally curated finish package with LVP wood-like flooring, a tankless water heater, a gas line to the range, air conditioning, and more.

The Colorado Farmhouse elevation adds timeless curb appeal, while the interior offers three bedrooms and two-and-a-half bathrooms. The kitchen is outfitted with white cabinetry, quartz countertops, and KitchenAid appliances, and opens seamlessly to the kitchen-great room area and covered outdoor space. A two-car garage with an 8-foot garage door provides added convenience, and the home is ideally located close to the neighborhood park.

DUETS AT STERLING RANCH BY TRUMARK HOMES | PLAN 1

DUETS
COLLECTION

RESIDENCE 1

3 Bedrooms • 2.5 Baths • 2-Car Garage
Approx. 1,720 Sq. Ft.



STERLING RANCH™
COLORADO

PRELIMINARY



Preliminary and subject to change. 720.802.6221 | SterlingRanchSales@trumarkco.com | 7046 Watercress Drive, Littleton CO | VIP-STERLINGRANCH.COM

TRUMARKHOMES All information is for reference only. Prices, rates and specifications subject to change and should be verified by all potential homebuyers. This is not an offer to sell but is intended for information only. The developer reserves the right to make modifications to materials, specifications, plans, pricing, various fees, designs, scheduling and delivery of homes without prior notice. All dimensions and square footages are approximate. Plan and dimensions may contain minor variations from floor to floor. Updated 05/30/2024. ©

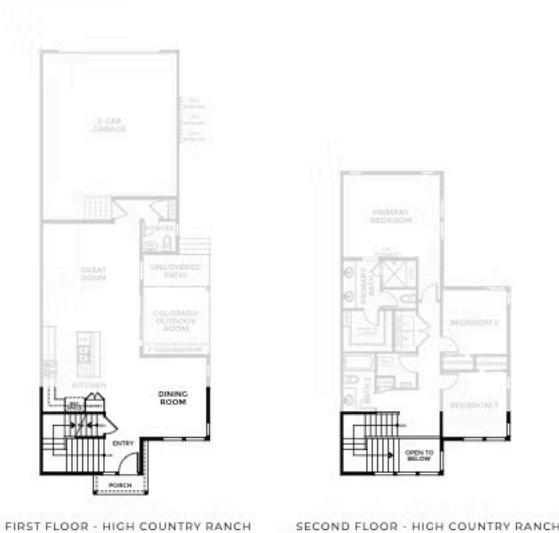
DUETS AT STERLING RANCH BY TRUMARK HOMES | PLAN 1

DUETS
COLLECTION

RESIDENCE 1 - ELEVATIONS
3 Bedrooms • 2.5 Baths • 2-Car Garage
Approx. 1,720 Sq. Ft.


STERLING RANCH™
COLORADO

PRELIMINARY



Preliminary and subject to change. 720.802.6221 | SterlingRanchSales@trumarkco.com | 7046 Watercress Drive, Littleton CO | VIP-STERLINGRANCH.COM

TRUMARKHOMES All information is for reference only. Prices, rates and specifications subject to change and should be verified by all potential homebuyers. This is not an offer to sell but is intended for information only. The developer reserves the right to make modifications to materials, specifications, plans, pricing, various fees, designs, scheduling and delivery of homes without prior notice. All dimensions and square footages are approximate. Plan and dimensions may contain minor variations from floor to floor. Updated 05/30/2024. ©

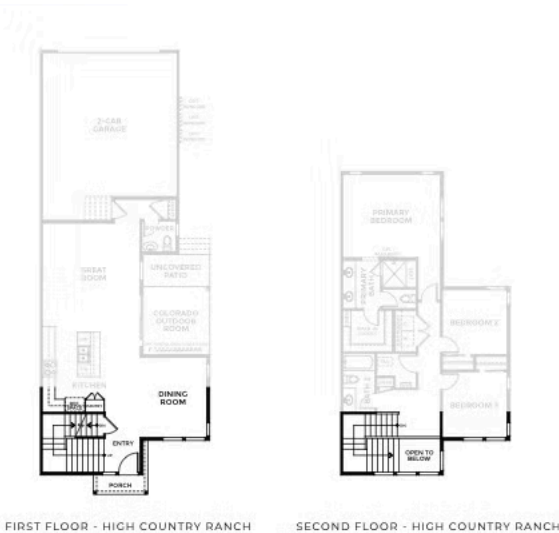
DUETS AT STERLING RANCH BY TRUMARK HOMES | PLAN 1

DUETS
COLLECTION

RESIDENCE 1 - ELEVATIONS
3 Bedrooms • 2.5 Baths • 2-Car Garage
Approx. 1,720 Sq. Ft.


STERLING RANCH™
COLORADO

PRELIMINARY



Preliminary and subject to change. 720.802.6221 | SterlingRanchSales@trumarkco.com | 7046 Watercress Drive, Littleton CO | VIP-STERLINGRANCH.COM

TRUMARKHOMES All information is for reference only. Prices, rates and specifications subject to change and should be verified by all potential homebuyers. This is not an offer to sell but is intended for information only. The developer reserves the right to make modifications to materials, specifications, plans, pricing, various fees, designs, scheduling and delivery of homes without prior notice. All dimensions and square footages are approximate. Plan and dimensions may contain minor variations from floor to floor. Updated 05/30/2024. ©

TRUMARKHOMES

7329 Goldbloom Lane

LITTLETON, CO 80125

GET IN TOUCH
(720) 704-1472

DUETS AT STERLING RANCH BY TRUMARK HOMES | PLAN 1

