

212 Kitty Hawk Court

SAN LUIS OBISPO, CA 93401



PRICE
\$931,597

PLAN
Plan 3

LOCATION
Islay at Avila Ranch

FEATURES

-  3 Bedrooms
-  2 Ba, 1 Half Ba
-  1,708 Sq. Ft.
-  2 Car Garage

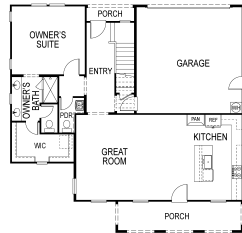
Homesite 245 is the Islay Plan 3 at Avila Ranch, a spacious two-story home that seamlessly blends functionality and comfort. This home is thoughtfully designed to balance style, comfort and functionality. This home sits on a corner lot, apart of a cul-de-sac across the street from a future neighborhood park. With multiple parks and trails for residences to access throughout the neighborhood. As you walk in you are greeted by an expansive open concept of the great room, kitchen, and dining room. The kitchen thoughtfully planned with appliances, a pantry for storage, and large center island. The dining room is just off of the kitchen perfect for gatherings with friends and family. While the generous great room provides room for all. Upstairs, the Owner's Suite is the ideal retreat with a large walk-in closet and double sink vanity. Secondary bedrooms provide comfortable accommodations for guest. A well-placed bathroom serves these bedrooms, maintaining privacy and convenience. The practical design is further emphasized by the inclusion of a laundry room with a nearby storage closet, making household chores a breeze. The Islay Plan 3 at Avila Ranch is a home designed to meet the needs of modern living with style and functionality.

212 Kitty Hawk Court

SAN LUIS OBISPO, CA 93401

GET IN TOUCH
(805) 900-3650

ESTERO AT AVILA RANCH
PLAN 3 - 2066

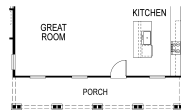


ELEVATION A



OPT BEDROOM 4
IN LIEU OF BONUS ROOM

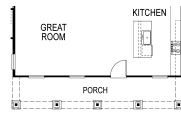
ELEVATION A



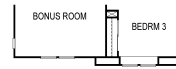
ELEVATION B



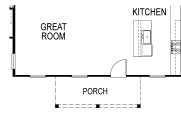
ELEVATION B



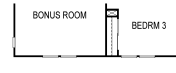
ELEVATION C



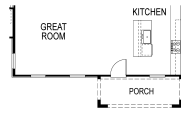
ELEVATION C



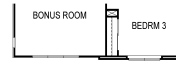
ELEVATION D



ELEVATION D



ELEVATION E



ELEVATION E