

# Plan 2

ISLAY AT AVILA RANCH



PRICE  
**\$899,990**

## FEATURES

-  3 Bedrooms
-  2 Ba, 1 Half Ba
-  1,609 Sq. Ft.
-  1 Car Garage

Introducing the Islay Plan 2 at Avila Ranch, a brilliant two-story home spanning 1,609 square feet that features an open design and plenty of room for the family. The first floor beckons with an inviting entryway leading to a spacious great room, a versatile space perfect for entertainment and relaxation. Strategically positioned adjacent to the great room is a kitchen equipped with modern appliances, center preparation island, a pantry for storage, and access to a charming porch ideal for entertaining or enjoying your morning coffee.

Upstairs, the owner's suite, a tranquil enclave on this level, boasts a private bathroom and two walk-in closets, ensuring a restful retreat. Two additional bedrooms provide comfortable accommodations for guests. A well-placed bathroom serves these bedrooms, maintaining privacy and convenience. The practical design is further emphasized by the inclusion of a laundry room, with the option to add cabinets, making household chores effortless.



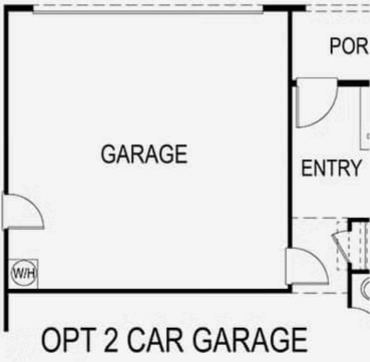


Plan 2

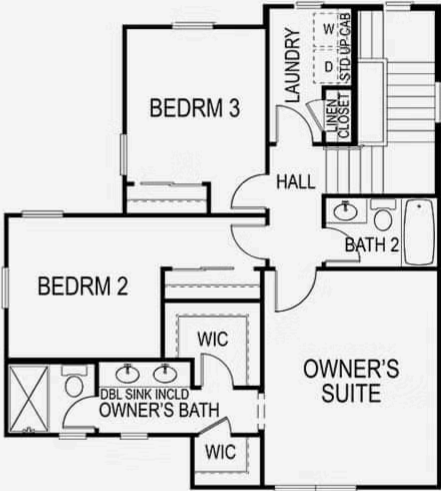
ISLAY AT AVILA RANCH



1ST FLOOR



OPT 2 CAR GARAGE



2ND FLOOR