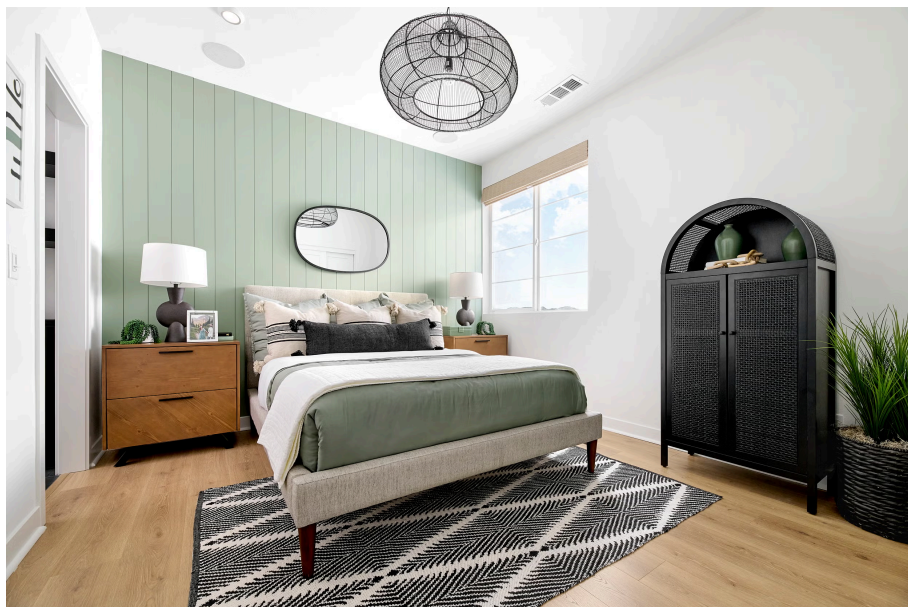


# 136 Hazel Drive

RANCHO MISSION VIEJO, CA 92694



PRICE  
**\$672,366**

PLAN  
Plan 1

LOCATION  
Willow at Rienda

FEATURES  
1 Bedrooms  
1 Ba, 1 Half Ba  
910 Sq. Ft.  
1 Car Garage

Plan One at Willow at Rienda prioritizes comfortable, everyday living with a thoughtful, well-considered floorplan. The possibilities are endless with a first-floor flex room, complete with a sunny patio and private powder room. Upstairs, an open-concept main floor features a modern, beautifully appointed kitchen and spacious great room, while a luxurious primary suite and bath tout premier finishes.

Additional features include welcoming 12" x 12" ceramic tile in choice of three colors at entry, full overlay Shaker-style cabinets in white thermofoil with chrome bar handles throughout, quality Mohawk carpet in multiple color choices in living room, bedrooms, flex rooms, loft, stairs, hallways, and closets, hybrid water heater, Kwikset smart lock exterior door hardware with Wi-Fi keypad, and much more!

