

# Plan 5

SADDLEBACK PLACE



## FEATURES

-  2 Bedrooms
-  2 Bathrooms
-  1,672 Sq. Ft.
-  2 Car Garage

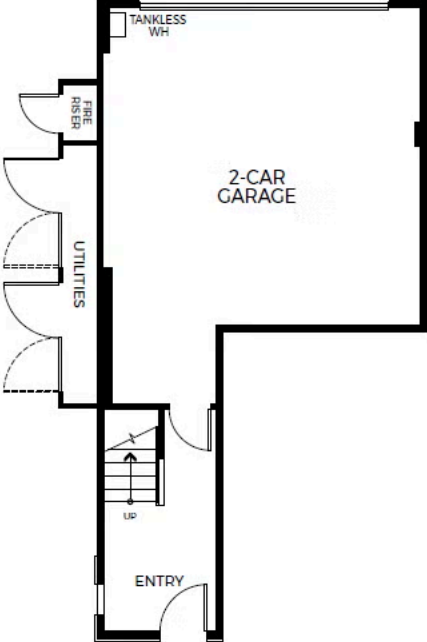
Plan 5 gives homeowners the space and customization options to design your home the way you'd like with two floors and 1,672 sq. ft. of luxurious living space. Upstairs from the garage, you'll discover the main living space made to entertain. The gourmet kitchen is complete with a pantry and center preparation island that overlook the spacious dining room and great room.

[View Community Brochure](#)



# Plan 5

SADDLEBACK PLACE



# Plan 5

SADDLEBACK PLACE

