

Plan 2X

SADDLEBACK PLACE



PRICE
\$760,900

FEATURES

-  1 Bedrooms
-  2 Bathrooms
-  981 Sq. Ft.
-  1 Car Garage

Phase 5 Coming Soon!

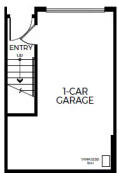
Anticipated Pricing from the High \$600,000's

With 988 sq. ft. of thoughtfully planned living space, Plan 2 at Saddleback Place three-story floor plan is all about modern conveniences. Come home to a direct-access garage that leads upstairs to the main floor, where a spacious great room seamlessly flows into an open kitchen and a flex room. Best of all, a third staircase elevates you to the primary bedroom – a private suite complete with an adjoining bathroom and generous walk-in closet.

Plan 2X

SADDLEBACK PLACE

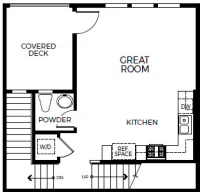
SADDLEBACK PLACE PLAN 2



Plan 2X

SADDLEBACK PLACE

SADDLEBACK PLACE PLAN 2X



Plan 2X

SADDLEBACK PLACE

SADDLEBACK PLACE PLAN 2

