

# Plan 2

SADDLEBACK PLACE



PRICE  
**\$699,990**

## FEATURES

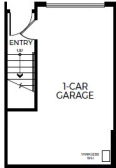
-  1 Bedrooms
-  1.5 Bathrooms
-  874 Sq. Ft.
-  1 Car Garage

With 874 sq. ft. of thoughtfully planned living space, Plan 2 at Saddleback Place three-story end-unit floor plan is all about modern conveniences. Come home to a direct-access garage that leads upstairs to the main floor, where a spacious great room seamlessly flows into an open kitchen and a covered deck. Best of all, a third staircase elevates you to the primary bedroom – a private suite complete with an adjoining bathroom and generous walk-in closet.

# Plan 2

SADDLEBACK PLACE

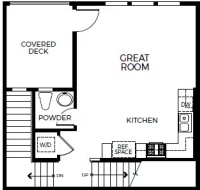
## SADDLEBACK PLACE PLAN 2



# Plan 2

SADDLEBACK PLACE

## SADDLEBACK PLACE PLAN 2X



# Plan 2

SADDLEBACK PLACE

## SADDLEBACK PLACE PLAN 2

