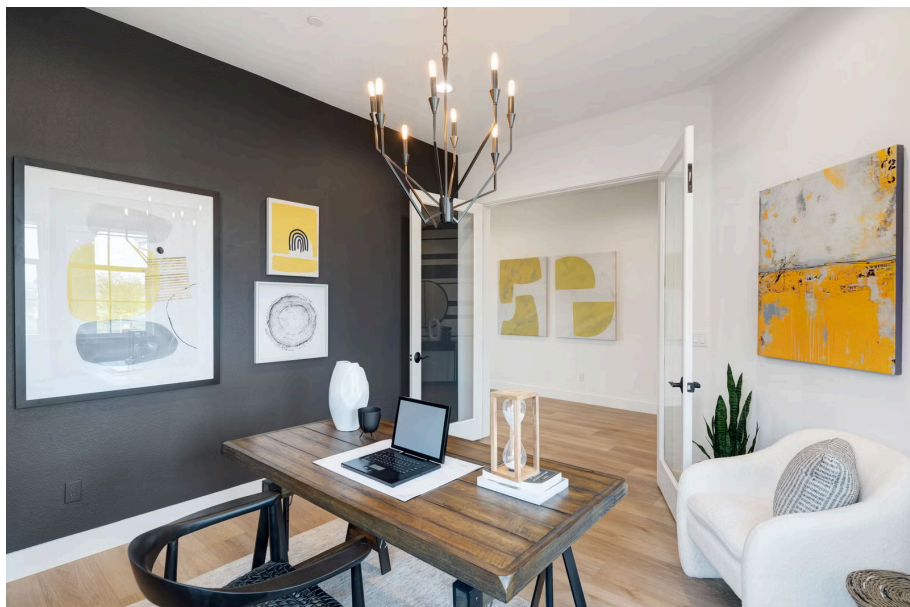


1351 Crescent Ave

MANTECA, CA 95336



PRICE
\$544,879

PLAN
Residence 3

LOCATION
Dawn at The Collective 55+

FEATURES
 2 Bedrooms
 2 Ba, 1 Half Ba
 2,462 Sq. Ft.
 2 Car Garage

Homesite 283 at Dawn at The Collective by Trumark Homes is a flexible single-story home offering 2,462 Sq. Ft. of living space with two bedrooms and two and a half bathrooms that is move in ready!

Key Features include Whirlpool stainless steel kitchen appliances, Stylish Slate Shaker Cabinets complemented by modern Brushed Nickel hardware pulls, upgraded Quartz Kitchen Countertops paired with a coordinated backsplash, and a combination of laminate, tile, and carpet flooring throughout the home, blending durability, comfort, and design versatility with a spacious 3-Car Tandem Garage, ideal for multiple vehicles, extra storage, or a home workshop area. The plan features an inviting entryway with a covered porch. A secondary bedroom and den are included off the front of the home. Beyond the entrance hall is the gourmet kitchen, featuring a walk-in pantry and spacious center preparation island overlooking the expansive great room and dining area. Off the great room is an optional covered California Room as an extension of your main living area.

The primary suite offers a stunning, spa-like bathroom with dual sinks, a walk-in shower, and a spacious bathtub. An expansive walk-in closet completes the primary suite.

Book your appointment today!

*Representative photos added

DAWN AT THE COLLECTIVE | RESIDENCE 3 FLOOR PLAN

Dawn | RESIDENCE 1
AT THE COLLECTIVE | 2 Bedrooms, 2.5 Baths, 2,021 Sq. Ft.

THE COLLECTIVE
TRULIVING MANTECA



IAR - Contemporary Farmhouse



IBR - Napa Valley Classic



ICR - Craftsman



ELEVATION 1CR



OPTIONAL COVERED
OUTDOOR ROOM



ELEVATION IAR



ELEVATION IBR

New Home Specialist • (925) 281-3227 • Sales@TrumarkHomes.com

Dawn Sales Gallery • 1306 Parkcrest Circle, Manteca, CA 95336 • VIP-Dawn.com

This is not an offer to sell but is intended for information only. The developer reserves the right to make modifications to materials, specifications, plans, pricing, various fees, designs, scheduling and delivery of homes without prior notice. Square footage is approximate. Floor plans are for representational purposes only. Plans and dimensions may contain minor variations from floor to floor. Renderings are artist's conceptions and do not depict actual homesites. CA CRE license #0187729, 8/2022.

PRELIMINARY AND SUBJECT TO CHANGE

TRUMARKHOMES