

# 1045 Finley Street

MANTECA, CA 95336



## PRICE

**\$617,851**

## PLAN

Residence 3

## LOCATION

Dawn at The Collective 55+

## FEATURES

-  2 Bedrooms
-  2 Ba, 1 Half Ba
-  2,462 Sq. Ft.
-  2 Car Garage

Homesite 295 at Dawn at The Collective by Trumark Homes is a flexible single-story home offering 2,462 Sq. Ft. of living space with two bedrooms and two and a half bathrooms that is Move-in ready! Key features include outdoor covered CA room, over \$70,000 in designer upgrades, Whirlpool stainless steel kitchen appliance package, \$10,000 flex credit that can be used towards special financing, design center credit, or closing costs when using our affiliate lender!

The plan features an inviting entryway with a covered porch. A secondary bedroom and den are included off the front of the home. Beyond the entrance hall is the gourmet kitchen, featuring a walk-in pantry and spacious center preparation island overlooking the expansive great room and dining area. The kitchen includes White recessed-panel Beech Shaker cabinetry and chrome knobs, and granite slab kitchen countertops with 6" backsplash. The primary suite offers a stunning, spa-like bathroom with dual sinks, walk-in shower, and a spacious bathtub. An expansive walk-in closet completes the primary suite. This home also comes luxury vinyl plank flooring at entry, kitchen, laundry, and bathrooms, Kohler plumbing features, and much more! Book your tour!



# 1045 Finley Street

MANTECA, CA 95336

## DAWN AT THE COLLECTIVE | RESIDENCE 3 FLOOR PLAN

Dawn  
AT THE COLLECTIVE

RESIDENCE 1  
2 Bedrooms, 2.5 Baths, 2,021 Sq. Ft.

THE COLLECTIVE  
TRULIVING MANTECA



IAR - Contemporary Farmhouse



IBR - Napa Valley Classic



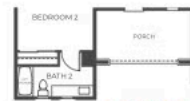
ICR - Craftsman



ELEVATION 1CR



OPTIONAL COVERED  
OUTDOOR ROOM



ELEVATION IAR



ELEVATION IBR

New Home Specialist • (925) 281-3227 • Sales@TrumarkHomes.com

Dawn Sales Gallery • 1306 Parkcrest Circle, Manteca, CA 95336 • VIP-Dawn.com

This is not an offer to sell but is intended for information only. The developer reserves the right to make modifications to materials, specifications, plans, pricing, various fees, designs, scheduling and delivery of homes without prior notice. Square footage is approximate. Floor plans are for representational purposes only. Plans and dimensions may contain minor variations from floor to floor. Renderings are artist's conceptions and do not depict actual homesites. CA CRE license #0187729, 8/2022.

PRELIMINARY AND SUBJECT TO CHANGE

TRUMARKHOMES