

387 Thunder Road South

MADERA, CA 93636



PRICE
\$492,589

PLAN
Sonata

LOCATION
Ariette at Riverstone

FEATURES

-  4 Bedrooms
-  2.5 Bathrooms
-  2,072 Sq. Ft.
-  2 Car Garage

Exclusive offer for homesite 7092, move into your dream home effortlessly with our all-inclusive turnkey package and up to \$30,000 to use as you choose!

Homesite 7092 is the Sonata plan at Ariette at Riverstone, a beautifully crafted two-story residence that offers an exceptional blend of style, comfort, and flexibility, tailored to meet the evolving needs of your family. Off the entryway is the versatile study with powder bath. Past the entry opens into the Great Room and kitchen, making hosting friends and family a breeze. The kitchen features a center island, with white cabinets, chrome features, and stainless steel appliances. Upstairs are three bedrooms, laundry room, and cozy loft. Additionally, the owner's suite is located upstairs, a haven of tranquility, boasts a spacious layout, a lavish en-suite bathroom, and a large walk-in closet.

387 Thunder Road South

MADERA, CA 93636

GET IN TOUCH
(559) 235-1269

Ariette
by COPPER RIVER

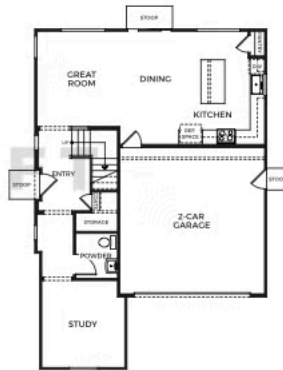
TRUMARKHOMES

SONATA

2,072 Sq. Ft.

4-5 Bedrooms w/ Loft
2.5-3 Baths
2 Car Garage

DRAFT



FIRST FLOOR



SECOND FLOOR

Trumark Homes reserves the right to make modifications to materials, specifications, plans, pricing, various fees, design, scheduling and delivery of homes without prior notice. It also reserves the right to accept or reject offers or to take directions to accept a limited number of offers on non-overlapping residences and to not any residence to any party at any time. This is not an offer to sell but is intended for information only. Square footage is approximate. Homes shown may not represent actual homesites. People shown do not display racial preference. CA DRE License #01877720.

