

1162 Ponderosa Way West

MADERA, CA 93636



PRICE

\$442,393

PLAN

Sonata

LOCATION

Ariette at Riverstone

FEATURES

-  4 Bedrooms
-  2 Ba, 1 Half Ba
-  2,072 Sq. Ft.
-  2 Car Garage

Homesite 7043 at Ariette at Riverstone features the Sonata plan, a beautifully crafted two-story residence offering a blend of style, comfort, and flexibility. Off the entryway is a versatile study with a powder bath and a closet under the stairs, ideal for storage. Past the stairwell, the Great Room provides a cozy space for relaxing and flows seamlessly into the dining area and kitchen. The kitchen is designed for both functionality and gathering, with ample counter space, a walk-in pantry, and a large center island. Upstairs are three bedrooms, a laundry room, and a loft that adds additional living space. The Owner's Suite, also located upstairs, offers a spacious layout, a luxurious en-suite bathroom, and a large walk-in closet. Finishes throughout the home include ash-colored cabinets, chrome accents, quartz countertops, tile flooring on the first floor and in bathrooms, and plush carpet on the stairwell and second floor. Stainless steel appliances, including a stovetop and dishwasher, add modern convenience. This home is part of the Golden Valley Unified School District. REPRESENTATIVE PHOTOS ADDED.

1162 Ponderosa Way West

MADERA, CA 93636

Ariette
COPPER RIVER

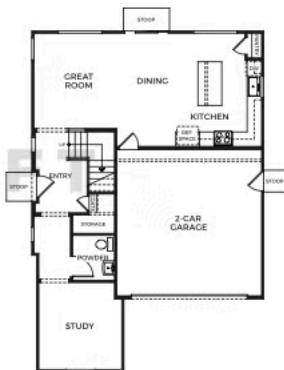
TRUMARKHOMES

SONATA

2,072 Sq. Ft.

4-5 Bedrooms w/ Loft
2.5-3 Baths
2 Car Garage

DRAFT



FIRST FLOOR



SECOND FLOOR

Trumark Homes reserves the right to make modifications to materials, specifications, plans, pricing, various fees, designs, scheduling and delivery of homes without prior notice. It also reserves the right to accept or reject offers or to take discretion to accept a limited number of offers on non-competitive occasions and to sell any residence to any party at any time. This is not an offer to sell but is intended for information only. Square footage is approximate. Homes shown may not represent actual homesites. Please shown do not display racial preference. CA DRE license W0877726.

