

1152 Ponderosa Way West

MADERA, CA 93636



PRICE
\$452,196

PLAN
Lydian

LOCATION
Ariette at Riverstone

FEATURES

-  3 Bedrooms
-  2 Ba, 1 Half Ba
-  1,955 Sq. Ft.
-  2 Car Garage

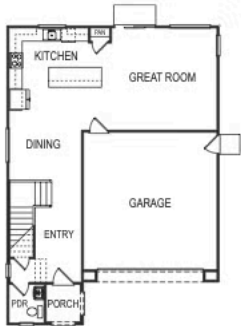
Homesite 7046 at Ariette at Riverstone features the Lydian plan, an elegant two-story home crafted with quality and designed with care. Upon entrance, a powder bathroom and closet offer convenient storage space. Past the stairwell, the dining area provides a welcoming space for gatherings and family meals, flowing seamlessly into a kitchen that includes a large center island, breakfast bar, and pantry. Parallel to the kitchen is the Great Room, a cozy area for relaxing after a busy day. Upstairs are two bedrooms, loft, a laundry room, and a full bathroom centrally located for easy access. The Owner's Suite offers a luxurious retreat with dual sink vanities, a large shower, linen closet, and two walk-in closets. Finishes throughout the home include midnight-colored cabinets, chrome accents, quartz countertops, a chevron-style kitchen backsplash, tile flooring on the first floor and in bathrooms, and plush carpet on the stairwell and second floor. Stainless steel appliances, including a stovetop and dishwasher, add modern convenience. This home sits on a corner homesite and is part of the Ariette at Riverstone community.

REPRESENTATIVE PHOTOS ADDED.

1152 Ponderosa Way West

MADERA, CA 93636

FIRST FLOOR



SECOND FLOOR



OPT BEDRM 4
@ LOFT