

# 1164 Ponderosa Way West

MADERA, CA 93636



PRICE  
**\$430,255**

PLAN  
Canto

LOCATION  
Ariette at Riverstone

## FEATURES

-  3 Bedrooms
-  2 Ba, 1 Half Ba
-  1,713 Sq. Ft.
-  2 Car Garage

Homesite 7042 is the Canto plan at Ariette at Riverstone, an exquisite two-story residence, designed with functionality and style in mind. Spanning 1,713 square feet of living space, with three bedrooms, two and a half bathrooms, and a loft. Key features include:

- Storm colored cabinets, chrome finishes, quartz countertops
- Stainless steel appliances including stovetop and dishwasher
- Tile flooring throughout first floor and bathrooms, plush carpet throughout stairwell and second floor
- Access to Riverstone's The Lodge clubhouse with thoughtful amenities

Upon entry, there is a powder bathroom and closet around the corner from the front door. Past the stairwell you are invited into the great room that is the perfect space for hosting family and friends. The great room flows effortlessly into the dining area and kitchen, which are both perfect for family meals. The kitchen features ample cabinetry, and beautiful countertops, making meal preparation a delight. Upstairs, the owner's suite offers a serene retreat, complete with a luxurious en-suite bathroom and ample closet space. Also upstairs, two additional bedrooms and loft share a well-appointed full bathroom, ensuring comfort and privacy for family members and guests alike.



# 1164 Ponderosa Way West

MADERA, CA 93636

Ariette  
COPPER RIVER

TRUMARKHOMES

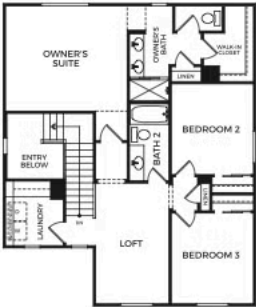
## CANTO

1,713 Sq. Ft.  
3 Bedrooms w/ Loft  
2.5 Baths  
2 Car Garage

DRAFT



FIRST FLOOR



SECOND FLOOR

Trumark homes reserves the right to make modifications to materials, specifications, plans, pricing, various fees, designs, scheduling and delivery of homes without prior notice. It also reserves the right to accept or reject offers or to take discretion to accept a limited number of offers in accordance with its policies and to sell any residence to any party at any time. This is not an offer to sell but is intended for information only. Square footage is approximate. Homes shown may not represent actual homesites. Please shown do not display racial preference. CA DRE license #00877726.

