

1160 Dana Road West

MADERA, CA 93636



PRICE

\$425,784

PLAN

Canto

LOCATION

Ariette at Riverstone

FEATURES

-  3 Bedrooms
-  2 Ba, 1 Half Ba
-  1,713 Sq. Ft.
-  2 Car Garage

Homesite 7083 is the Canto plan at Ariette at Riverstone, an exquisite two-story residence, designed with functionality and style in mind. Thoughtfully designed to maximize space for the whole family, comfort and convience can be found throughout. Tile flooring can be found throughout first floor and bathrooms, plush carpet throughout stairwell and second floor. Off the entryway is a powder bathroom and closet, under the stairs, perfect for extra storage space. Past the stairwell, you are invited into the great room that is a cozy space for family gatherings and relaxation. The dining area is parallel to the kitchen, making family mealtime even more accessible. The kitchen features ample cabinetry, and beautiful countertops, making meal preparation a delight. Featuring stainless steel appliances including stovetop and dishwasher, gray colored cabinets, chrome finishes, and quartz countertops. Upstairs, the owner's suite offers a serene retreat, complete with a luxurious en-suite bathroom and ample closet space. Also upstairs, two additional bedrooms and loft share a well-appointed full bathroom, ensuring comfort and privacy for family members and guests alike. This home sits on a corner homesite and is apart of the Golden Valley Unified School District.

REPRESENTATIVE PHOTOS ADDED.

1160 Dana Road West

MADERA, CA 93636

GET IN TOUCH
(559) 235-1269

Ariette
COPPER RIVER

TRUMARKHOMES

CANTO

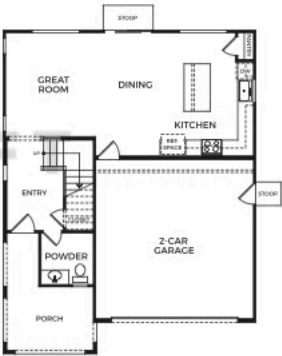
1,713 Sq. Ft.

3 Bedrooms w/ Loft

2.5 Baths

2 Car Garage

DRAFT



FIRST FLOOR



SECOND FLOOR

Trumark homes reserves the right to make modifications to materials, specifications, plans, pricing, various fees, designs, scheduling and delivery of homes without prior notice. It also reserves the right to accept or reject offers or its sole discretion. It reserves a limited number of offers and reserves the right to sell any residence to any party at any time. This is not an offer to sell but is intended for information only. Square footage is approximate. Homes shown may not represent actual homesites. Please shown do not display racial preference. CA DRE license #00877726.

