

Alto

ARIETTE AT RIVERSTONE



FEATURES

-  2 Bedrooms
-  2 Bathrooms
-  1,163 Sq. Ft.
-  1 Car Garage

The Alto plan at Ariette at Riverstone, is the epitome of comfort and style in this beautifully designed floorplan, perfectly suited for those who appreciate the blend of modern living and cozy charm. A charming single story-home with a functional, open floorplan. The heart of this home is kitchen, featuring a large center island and breakfast bar that flows into the living and dining spaces. The open-concept design fosters a welcoming environment for entertaining, relaxing, and everyday living. The Owner's Suite includes a sizable walk-in-closet and a soaking tub.

Alto

ARIETTE AT RIVERSTONE

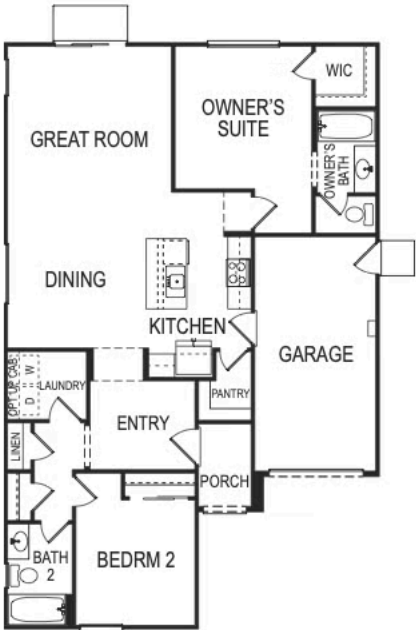
GET IN TOUCH
(559) 235-1269

Ariette
at RIVERSTONE

Features

- 2 Bedrooms
- 2 Bathrooms
- 1 Car Garage

Alto
1,163 Sq. Ft.



*All images are for representational purposes only and will differ from homes and community as actually constructed. Square footages are approximate. Models do not reflect racial preference. Homes are constructed and marketed by Trumark Homes LLC, a California limited liability company, and its affiliated entities, including without limitation Trumark Construction Services, Inc. (CA Contractor License #925932), WCP Developers LLC (CA Contractor License #1033148), and real estate brokered by Trumark Construction Services, Inc. (CA DRE License #01877720) and WCP Real Estate, Inc. (CA DRE License #02255906), on behalf of Wathen Castanos Riverstone Developers, Inc. Equal Housing Opportunity. Brokers Welcome. Updated 01/08/24

