

26778 Hadley Ave

LOMA LINDA, CA 92373

GET IN TOUCH
(949) 676-6377



PRICE
\$912,428

PLAN
Plan 2

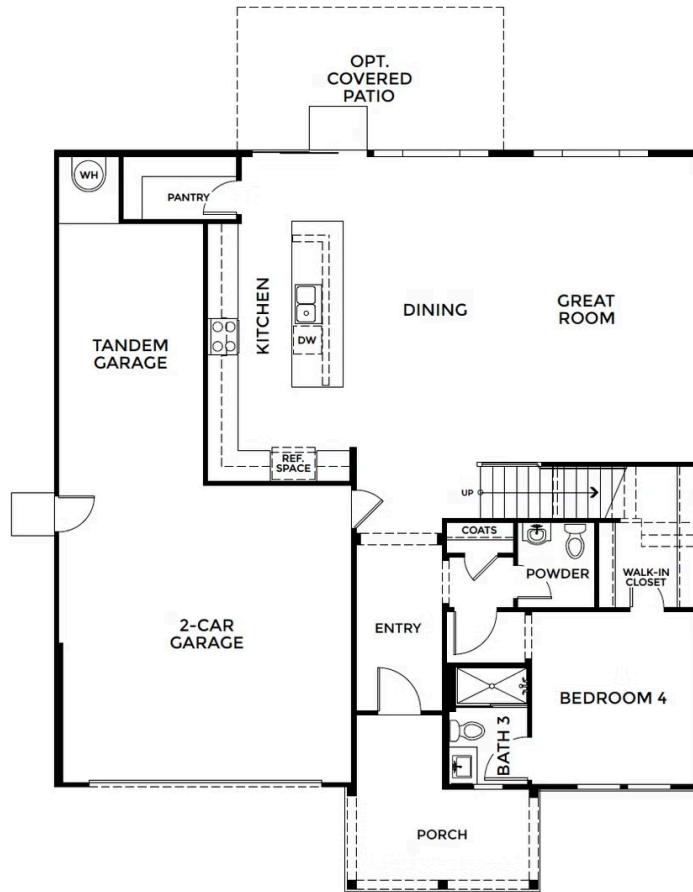
LOCATION
Eden at Covenant Point

FEATURES

-  4 Bedrooms
-  3 Ba, 1 Half Ba
-  3,141 Sq. Ft.
-  3 Car Garage

Welcome to Homesite 25, a beautifully designed Plan 2 at Eden at Covenant Point, ideally situated on a desirable corner lot. As you enter through the inviting front porch, you're welcomed into a spacious foyer that leads into the heart of the home. Just off the entry, a private first-floor bedroom with an adjacent bath offers the perfect space for overnight guests, extended family, or a home office. Continue into the expansive open-concept living area, where the great room, dining area, and gourmet kitchen come together to create an ideal setting for entertaining and everyday living. The oversized kitchen island, walk-in pantry, and abundant cabinetry provide both style and functionality, while large windows fill the space with natural light. Upstairs, a generous loft creates a flexible living space for movie nights, a game room, or a quiet retreat. The private primary suite offers a relaxing escape, complete with a spacious walk-in closet and a spa-inspired bath featuring dual vanities, a soaking tub, and a separate shower. Two additional bedrooms, a shared family bath, a versatile flex room, and a conveniently located laundry room complete the second floor. Highlights: Desirable corner homesite Private first-floor bedroom with adjacent bath Open-concept great room, dining area, and gourmet kitchen Oversized kitchen island and walk-in pantry Spacious upstairs loft and versatile flex room Private primary suite with spa-inspired bath and walk-in closet Convenient upstairs laundry room Attached 3-car tandem garage Don't miss your opportunity to own Homesite 25 at Eden at Covenant Point. Contact us today to schedule your private tour and experience everything this exceptional home has to offer.

FIRST FLOOR AT PLAN 2 AT EDEN AT COVENANT POINT BY TRUMARK HOMES



SECOND FLOOR AT PLAN 2 AT EDEN AT COVENANT POINT BY TRUMARK HOMES

