

# Plan 4

L'AUBE AT SOLIS PARK



## FEATURES

-  3 Bedrooms
-  2 Bathrooms
-  2,012 Sq. Ft.
-  2 Car Garage

Plan 4 at L'Aube is an expansive three-story single-family home offering 2,012 sq. ft. of living space. Head past the foyer to the main living area, and you'll find a multi-functional great room, dining room and open kitchen. The gourmet kitchen features a pantry, dual sinks and a center preparation island overlooking the spacious great room. The kitchen includes full overlay, frameless flat panel contemporary maple cabinetry with knobs, granite slab kitchen countertops with your color choice of 6" backsplash, and GE stainless steel premium kitchen appliance package.

Upstairs are two secondary bedrooms, bathroom including a bathtub and shower, laundry room, and a contemporary primary suite. This suite includes a stunning, spa-like bathroom with dual sinks, walk-in shower and free-standing bathtub. This bathroom is complete with a generous walk-in closet. The top floor is the expansive bonus room and deck area. This plan comes with your color choice of Welcoming tile at entry, kitchen, bathrooms and laundry, Quality Mohawk carpet in multiple color choices, and much more!

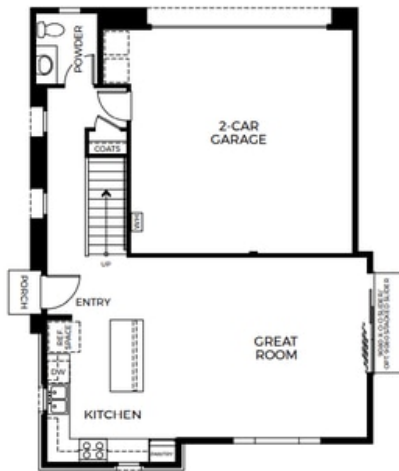
# Plan 4

L'AUBE AT SOLIS PARK

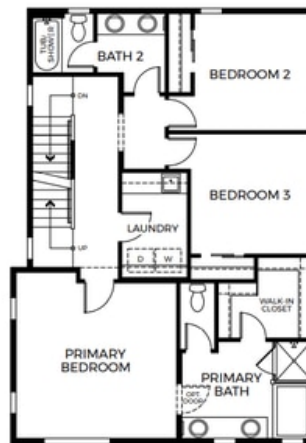
## Plan 4

3-Story Single-Family Home | Approx. 2,012 Sq. Ft.  
3 Bedrooms | 2.5 Bathrooms | 2-Car Garage

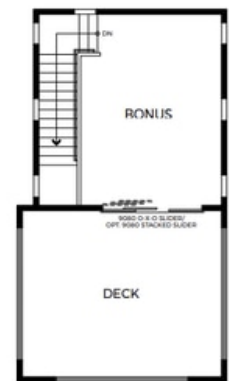
L'AUBE  
at Solis Park



First Floor



Second Floor



Third Floor

Preliminary and Subject to Change

SALES GALLERY | 240 Abacus | Irvine, CA 92618 | [TrumarkHomes.com](http://TrumarkHomes.com)  
Sales@TrumarkHomes.com | (949) 519-4937



This is not an offer to sell but is intended for information only. The developer reserves the right to make modifications to materials, specifications, plans, pricing, various fees, designs, scheduling and delivery of homes without prior notice. Square footage is approximate. Plan and dimensions may contain minor variations from floor to floor. Renderings are artist's conceptions and do not depict actual homesites. CA DRE license #01877720.

# Plan 4

L'AUBE AT SOLIS PARK

## Plan 4

3-Story Single-Family Home | Approx. 2,012 Sq. Ft.  
3 Bedrooms | 2.5 Bathrooms | 2-Car Garage

L'AUBE  
at Solis Park



Preliminary and Subject to Change

SALES GALLERY | 240 Abacus | Irvine, CA 92618 | [TrumarkHomes.com](http://TrumarkHomes.com)  
[Sales@TrumarkHomes.com](mailto:Sales@TrumarkHomes.com) | (949) 519-4937



This is not an offer to sell but is intended for information only. The developer reserves the right to make modifications to materials, specifications, plans, pricing, various fees, designs, scheduling and delivery of homes without prior notice. Square footage is approximate. Plan and dimensions may contain minor variations from floor to floor. Renderings are artist's conceptions and do not depict actual homesites. CA DRE license #01877720. 