

2902 E Veleta Drive

FRESNO, CA 93730



PRICE

\$552,645

PLAN

Sonata

LOCATION

Ariette at Copper River

FEATURES

 5 Bedrooms

 3 Ba

 2,072 Sq. Ft.

 2 Car Garage

Homesite 144 is the Sonata plan at Ariette at Copper River, a thoughtfully crafted two-story home tailored to meet the evolving needs of your family. Upon entry, a hallway to the right leads to Bedroom 5 with a full bathroom, offering a private setup ideal for guests or flexible use. Nearby, a coat closet is tucked beneath the stairwell for added storage. Beyond the stairs, the home opens into the Great Room and dining area, creating a connected and functional living space. The dining area flows directly into the kitchen, which features ample counterspace, a large center island, and a pantry closet for everyday convenience. Upstairs, a loft provides a comfortable secondary living area and leads into the Owner's Suite. The suite includes an en-suite bathroom with a dual sink vanity, a walk-in closet, and a linen closet. Bedrooms 2 and 3 share a full bathroom located just outside the suite. Bedroom 4 is situated near the laundry room, which includes an interior storage closet to support daily organization.

2902 E Veleta Drive

FRESNO, CA 93730

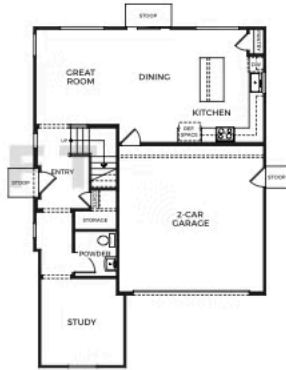
GET IN TOUCH
(559) 235-1269



SONATA

2,072 Sq. Ft.
4-5 Bedrooms w/ Loft
2.5-3 Baths
2 Car Garage

DRAFT



FIRST FLOOR



SECOND FLOOR

Trumark Homes reserves the right to make modifications to materials, specifications, plans, pricing, various fees, design, scheduling and delivery of homes without prior notice. It also reserves the right to accept or reject offers or to take direction to accept a limited number of offers on non-occupied residences and to not any residence to any party at any time. This is not an offer to sell but is intended for information only. Square footage is approximate. Homes shown may not represent actual homesites. People shown do not display racial preference. CA DRE License #01877720.

