

# 2878 E Veleta Drive

FRESNO, CA 93730

GET IN TOUCH  
(559) 235-1269



PRICE  
**\$548,985**

PLAN  
Sonata

LOCATION  
Ariette at Copper River

## FEATURES

-  4 Bedrooms
-  2 Ba, 1 Half Ba
-  2,072 Sq. Ft.
-  2 Car Garage

Homesite 142 is the Sonata plan at Ariette at Copper River, a beautifully crafted two-story residence that offers a blend of style, comfort, and flexibility. Through the front door, you will find Bedroom 5 with a full bathroom around the corner. Past the stairwell, the floor opens into the Great Room and dining space. This area makes family gatherings a breeze. The dining space flows effortlessly into the kitchen, highlighted for ample countertop space, a large center island, and a pantry closet. Upstairs begins with a cozy loft and leads into the Owner's Suite, with an en-suite bathroom with a dual sink vanity, a walk-in closet, and linen closet. Around the corner from the suite's entrance is a full bathroom in a centrally located spot for Bedrooms 2 and 3 to access. The second floor is complete with Bedroom 4 and the laundry room with an included storage closet.



# 2878 E Veleta Drive

FRESNO, CA 93730

GET IN TOUCH  
(559) 235-1269



## SONATA

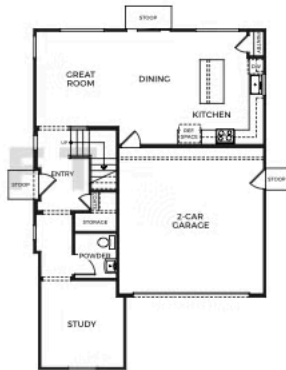
2,072 Sq. Ft.

4-5 Bedrooms w/ Loft

2.5-3 Baths

2 Car Garage

DRAFT



FIRST FLOOR



SECOND FLOOR

Trumark Homes reserves the right to make modifications to materials, specifications, plans, pricing, various fees, design, scheduling and delivery of homes without prior notice. It also reserves the right to accept or reject offers or to take direction to accept a limited number of offers on non-occupied residences and to not any residence to any party at any time. This is not an offer to sell but is intended for information only. Square footage is approximate. Homes shown may not represent actual homesites. Please shown do not display racial preference. CA DRE License #01877720.

