

Sonata

ARIETTE AT COPPER RIVER



PRICE
\$569,990

FEATURES

-  4 - 5 Bedrooms
-  2.5 - 3 Bathrooms
-  2,072 Sq. Ft.
-  2 Car Garage

The Sonata plan at Ariette at Copper River, is a beautifully crafted two-story residence that offers an exceptional blend of style, comfort, and flexibility, tailored to meet the evolving needs of your family. Off the entryway is the versatile study with powder bath, with the opportunity to have an optional bedroom 5 with full bathroom in-lieu. Upstairs are three bedrooms, laundry room, and cozy loft. Additionally, the owner's suite is located upstairs, a haven of tranquility, boasts a spacious layout, a lavish en-suite bathroom, and a large walk-in closet.

Sonata

ARIETTE AT COPPER RIVER

Ariette
AT COPPER RIVER

TRUMARKHOMES

SONATA

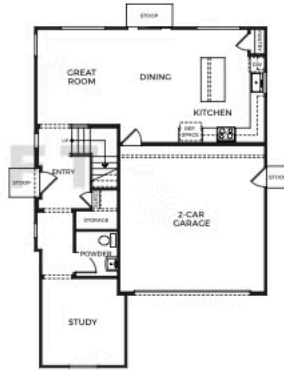
2,072 Sq. Ft.

4-5 Bedrooms w/ Loft

2.5-3 Baths

2 Car Garage

DRAFT



FIRST FLOOR



SECOND FLOOR

Trumark Homes reserves the right to make modifications to materials, specifications, plans, pricing, various fees, design, scheduling and delivery of homes without prior notice. It also reserves the right to accept or reject offers or to take directions to accept a limited number of offers on non-overlapping residences and to not any residence to any party at any time. This is not an offer to sell but is intended for information only. Square footage is approximate. Homes shown may not represent actual homesites. People shown do not display racial preference. CA DRE License #01877720.

