

2890 E Veleta Drive

FRESNO, CA 93730

GET IN TOUCH
(559) 235-1269



PRICE
\$526,100

PLAN
Lydian

LOCATION
Ariette at Copper River

FEATURES

-  3 Bedrooms
-  2 Ba, 1 Half Ba
-  1,955 Sq. Ft.
-  2 Car Garage

Homesite 143 is the Lydian plan at Ariette at Copper River, an elegant two-story, crafted with quality and designed with care. The entry opens to a powder bathroom and convenient storage closet positioned beneath the stairwell, just off the foyer. Continuing past the stairs, the home unfolds into the dining area, which connects seamlessly to the kitchen. Designed for everyday use and entertaining, the kitchen includes abundant counterspace, a large center island, and a pantry closet, and opens directly to the Great Room for easy gatherings. Upstairs, a central loft introduces the second level and leads to the Owner's Suite, featuring a spacious en-suite bathroom with a dual sink vanity, two walk-in closets, and two linen closets. The laundry room is located just outside the suite for added efficiency. On the opposite side of the floor, two additional bedrooms share a full bathroom, completing the upper level.

2890 E Veleta Drive

FRESNO, CA 93730

GET IN TOUCH
(559) 235-1269

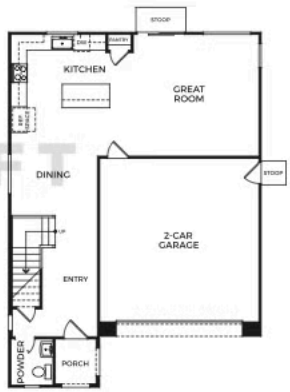


LYDIAN

1,955 Sq. Ft.

- 3 Bedrooms w/ Loft or Optional 4 Bedroom
- 2.5 Baths
- 2 Car Garage

DRAFT



FIRST FLOOR



SECOND FLOOR

Trumark Homes reserves the right to make modifications to materials, specifications, plans, pricing, various fees, design, scheduling and delivery of homes without prior notice. It also reserves the right to accept or reject offers or to take directions to accept a limited number of offers on non-represent occupied residences and to not any residence to any party at any time. This is not an offer to sell but is intended for information only. Square footage is approximate. Homes shown may not represent actual homesites. People shown do not display racial preference. CA DRE License #01877720.

