

Rows Plan 1 - A TruFlex Design

ROWS AT ZEST



PRICE
\$730,162

FEATURES

-  1 - 4 Bedrooms
-  2.5 Bathrooms
-  1,661 Sq. Ft.
-  2 Car Garage

Come home to Zest's TruFlex Plan 1, offering three stories and 1661 sq. ft. of light-filled space. Head past the foyer to the main living area, and you'll find a multi-functional great room and open kitchen. The gourmet kitchen features a pantry, dual sinks and a center preparation island overlooking the spacious great room. A chic powder room for guests, plus a useful storage area, round out the first floor. The kitchen includes full overlay, frameless flat panel contemporary maple cabinetry with knobs, granite slab kitchen countertops with your color choice of 6" backsplash, and GE stainless steel premium kitchen appliance package.

Upstairs, you'll find a generously sized primary suite and adjoining bathroom. The third floor is open to the bedroom below, brightening up the private sanctuary. This plan comes with your color choice of Welcoming tile at entry, kitchen, bathrooms and laundry, Kohler plumbing features, and much more!

Rows Plan 1 - A TruFlex Design

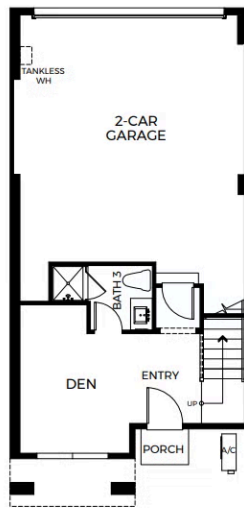
ROWS AT ZEST



ROWS - TRUFLEX PLAN 1 Floor 1 Design Layout

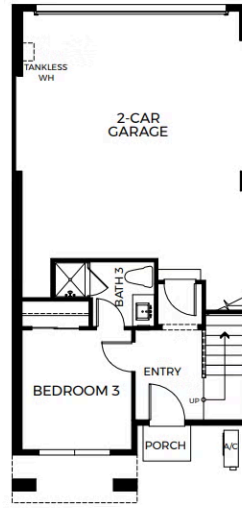
Three-Story | Approx. 1,661 Sq. Ft.
1 - 4 Bedrooms | 3.5 Baths | 2-Car Garage

PRELIMINARY



FIRST FLOOR
1A

OR



FIRST FLOOR
1B

SALES GALLERY | 671 Limoncello Lane, Covina, CA 91723 | VIP-Zest.com
Sales@TrumarkHomes.com | (626) 603-5476



This is not an offer to sell but is intended for information only. The developer reserves the right to make modifications in materials, specifications, plans, pricing, various fees, designs, scheduling, and delivery of homes without prior notice. All dimensions and square footages are approximate. Plan and dimensions may contain minor variations from floor to floor. CalDRE license #01877720.



Rows Plan 1 - A TruFlex Design

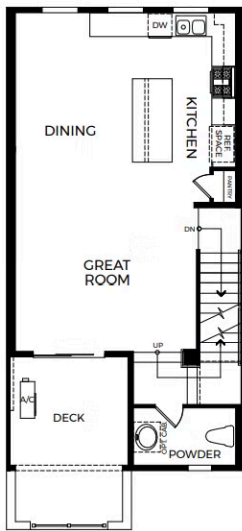
ROWS AT ZEST



ROWS - TRUFLEX PLAN 1 Floor 2 Design Layout

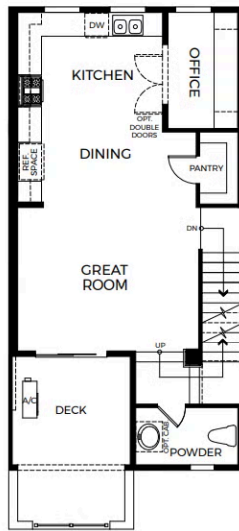
Three-Story | Approx. 1,661 Sq. Ft.
1 - 4 Bedrooms | 3.5 Baths | 2-Car Garage

PRELIMINARY



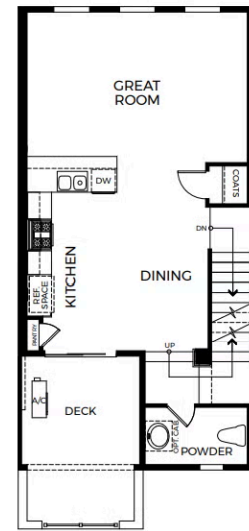
SECOND FLOOR
2A

OR



SECOND FLOOR
2B

OR



SECOND FLOOR
2C

SALES GALLERY | 671 Limoncello Lane, Covina, CA 91723 | VIP-Zest.com
Sales@TrumarkHomes.com | (626) 603-5476



This is not an offer to sell but is intended for information only. The developer reserves the right to make modifications in materials, specifications, plans, pricing, various fees, designs, scheduling, and delivery of homes without prior notice. All dimensions and square footages are approximate. Plan and dimensions may contain minor variations from floor to floor. CalDRE license #0187720.



Rows Plan 1 - A TruFlex Design

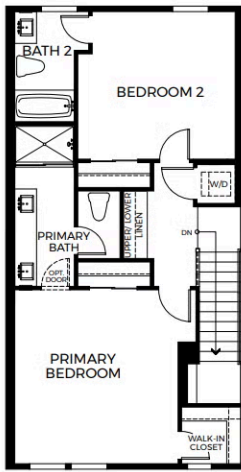
ROWS AT ZEST



ROWS - TRUFLEX PLAN 1 Floor 3 Design Layout

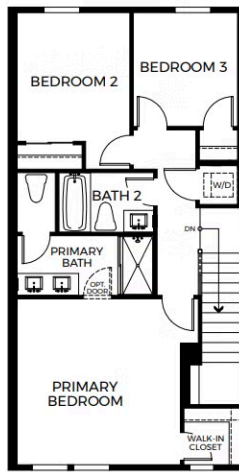
Three-Story | Approx. 1,661 Sq. Ft.
1 - 4 Bedrooms | 3.5 Baths | 2-Car Garage

PRELIMINARY



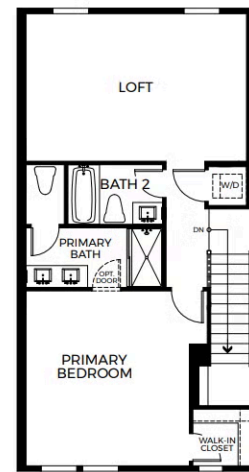
THIRD FLOOR
3A

OR



THIRD FLOOR
3B

OR



THIRD FLOOR
3C

SALES GALLERY | 671 Limoncello Lane, Covina, CA 91723 | VIP-Zest.com
Sales@TrumarkHomes.com | (626) 603-5476



This is not an offer to sell but is intended for information only. The developer reserves the right to make modifications in materials, specifications, plans, pricing, various fees, designs, scheduling, and delivery of homes without prior notice. All dimensions and square footages are approximate. Plan and dimensions may contain minor variations from floor to floor. CalDRE license #01877720.

