

Rows Plan 2 - A TruFlex Design

ROWS AT COVINA BOWL



FEATURES

-  1 - 5 Bedrooms
-  2 Ba, 1 Half Ba
-  1,705 Sq. Ft.
-  2 Car Garage

SOLD OUT!

There's a lot to love with Plan 2's beautifully designed floor plan offering 1,705 sq. ft. of living space. A two-car garage connects to a convenient first-floor den or secondary bedroom and ensuite bathroom. Head upstairs to the main living area and find the expansive great room, contemporary kitchen, and dining area that leads out to a private deck. The gourmet kitchen is complete with a pantry, dual sinks and the option for center preparation island. The kitchen includes full overlay, frameless flat panel contemporary maple cabinetry with knobs, granite slab kitchen countertops with your color choice of 6" backsplash, and GE stainless steel premium kitchen appliance package.

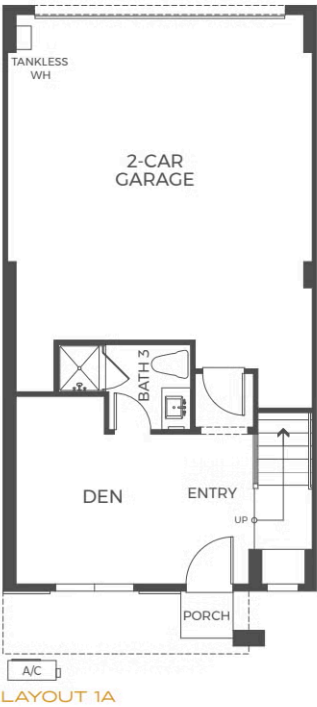
The third floor is customizable with plenty of options to meet families' differing needs. Add one to two secondary bedrooms or replace them with a larger primary bathroom and multi-functional flex room. Adjacent is the stunning primary suite, complete with a private balcony, walk-in closet and a spa-like bathroom. This plan comes with your color choice of Welcoming tile at entry, kitchen, bathrooms and laundry, Kohler plumbing features, and much more!

Rows Plan 2 - A TruFlex Design

ROWS AT COVINA BOWL

ROWS TRUFLEX PLAN 2 | FLOOR 1

3-STORY | APPROX. 1,705 SQ. FT. | 1 - 5 BEDROOMS | 2.5 - 4 BATHROOMS | 2-CAR GARAGE



OR



COVINABOWL.VIP.COM | Sales@TrumarkHomes.com | (626) 603-5417

TRUMARKHOMES

This is not an offer to sell but is intended for information only. The developer reserves the right to make modifications to materials, specifications, plans, pricing, various fees, designs scheduling and delivery of homes without prior notice. All dimensions and square footages are approximate. Plans and dimensions may contain minor variations from floor to floor. Homes shown do not represent actual homesites. CA DRE license #01877720. 

Rows Plan 2 - A TruFlex Design

ROWS AT COVINA BOWL

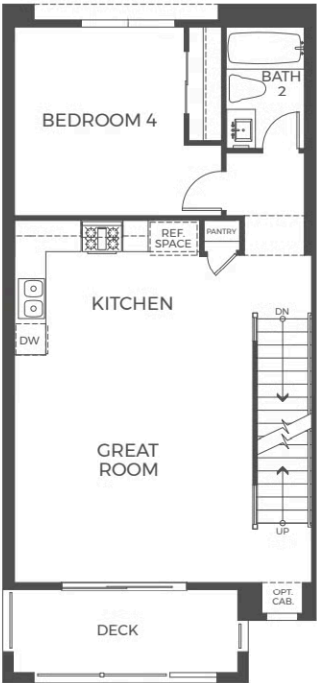
ROWS TRUFLEX PLAN 2 | FLOOR 2

3-STORY | APPROX. 1,705 SQ. FT. | 1 - 5 BEDROOMS | 2.5 - 4 BATHROOMS | 2-CAR GARAGE



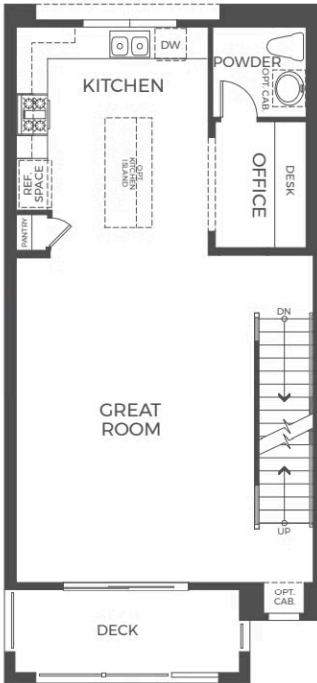
LAYOUT 2A

OR



LAYOUT 2B

OR




LAYOUT 2C



COVINABOWL.VIP.COM | Sales@TrumarkHomes.com | (626) 603-5417



This is not an offer to sell but is intended for information only. The developer reserves the right to make modifications to materials, specifications, plans, pricing, various fees, designs scheduling and delivery of homes without prior notice. All dimensions and square footages are approximate. Plans and dimensions may contain minor variations from floor to floor. Homes shown do not represent actual homesites. CA DRE license #01877720. 

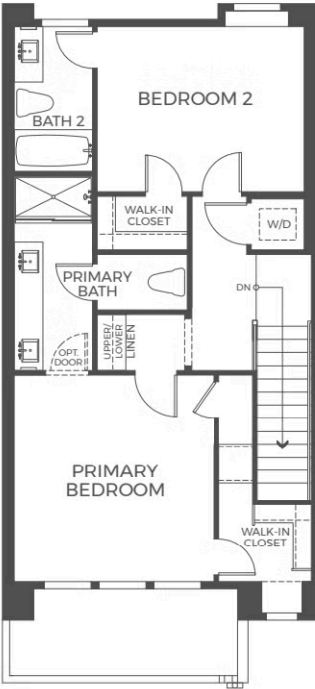


Rows Plan 2 - A TruFlex Design

ROWS AT COVINA BOWL

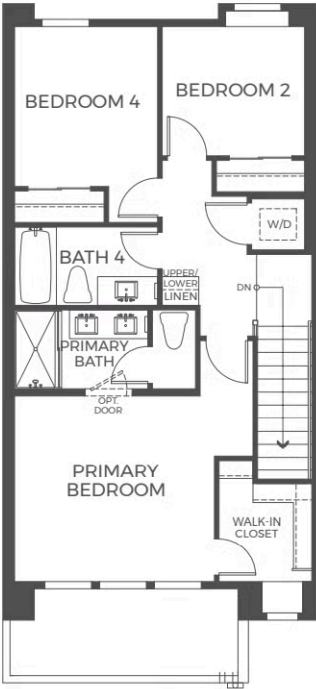
ROWS TRUFLEX PLAN 2 | FLOOR 3

3-STORY | APPROX. 1,705 SQ. FT. | 1 - 5 BEDROOMS | 2.5 - 4 BATHROOMS | 2-CAR GARAGE



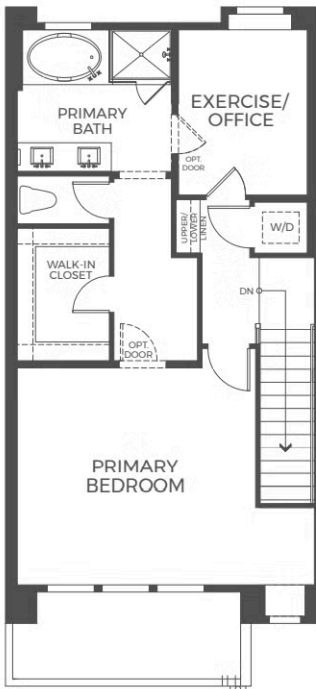
LAYOUT 3A

OR



LAYOUT 3B

OR



LAYOUT 3C

Covina
BOWL

COVINABOWL.VIP.COM | Sales@TrumarkHomes.com | (626) 603-5417

TRUMARKHOMES

This is not an offer to sell but is intended for information only. The developer reserves the right to make modifications to materials, specifications, plans, pricing, various fees, designs scheduling and delivery of homes without prior notice. All dimensions and square footages are approximate. Plans and dimensions may contain minor variations from floor to floor. Homes shown do not represent actual homesites. (CA DBP license #10877770) A