

# Rows Plan 1 - A TruFlex Design

ROWS AT COVINA BOWL



## FEATURES

-  1 - 4 Bedrooms
-  3 Ba, 1 Half Ba
-  1,573 Sq. Ft.
-  2 Car Garage

## Flexible 3-story townhomes

Come home to Covina Bowl's Plan 1 Rows offering three stories and 1,573 sq. ft. of light-filled space. A two-car garage connects to a convenient first-floor den or secondary bedroom and ensuite bathroom. Head upstairs to the main living area and find the expansive great room, contemporary kitchen, and dining area that leads out to a private deck. The gourmet kitchen is complete with a pantry, dual sinks and the option for center preparation island. The kitchen includes full overlay, frameless flat panel contemporary maple cabinetry with knobs, granite slab kitchen countertops with your color choice of 6" backsplash, and GE stainless steel premium kitchen appliance package.

The top floor includes plenty of space to stretch out in comfort and style. This floor comes with your choice of additional secondary bedrooms or replace them with a generous loft. Adjacent is the stunning primary suite, complete with a private balcony, walk-in closet and a spa-like bathroom. This plan comes with your color choice of Welcoming tile at entry, kitchen, bathrooms and laundry, Kohler plumbing features, and much more!

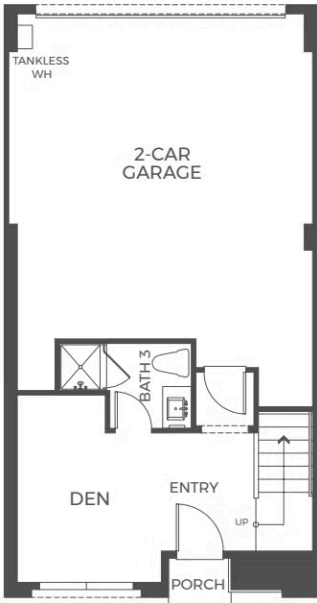


# Rows Plan 1 - A TruFlex Design

ROWS AT COVINA BOWL

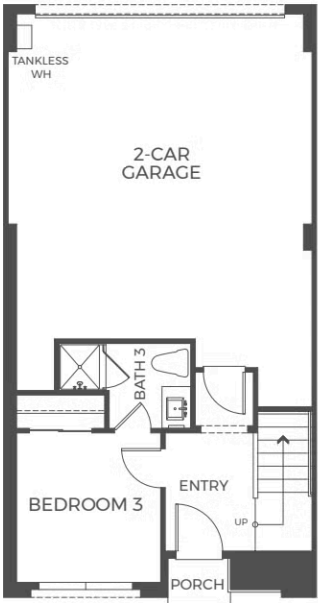
## ROWS TRUFLEX PLAN 1 | FLOOR 1

3-STORY | APPROX. 1,573 SQ. FT. | 1 - 4 BEDROOMS | 3.5 BATHROOMS | 2-CAR GARAGE



A/C  
LAYOUT 1A

OR



A/C  
LAYOUT 1B

Covina  
BOWL

COVINABOWL.VIP.COM | Sales@TrumarkHomes.com | (626) 603-5417

TRUMARKHOMES

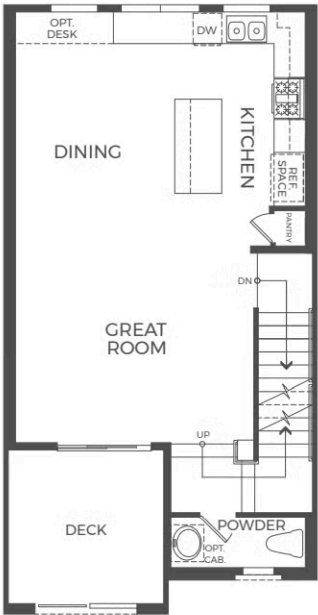
This is not an offer to sell but is intended for information only. The developer reserves the right to make modifications to materials, specifications, plans, pricing, various fees, designs scheduling and delivery of homes without prior notice. All dimensions and square footages are approximate. Plans and dimensions may contain minor variations from floor to floor. Homes shown do not represent actual homesites. CA DRE license #01877720. ©

# Rows Plan 1 - A TruFlex Design

ROWS AT COVINA BOWL

## ROWS TRUFLEX PLAN 1 | FLOOR 2

3-STORY | APPROX. 1,573 SQ. FT. | 1 - 4 BEDROOMS | 3.5 BATHROOMS | 2-CAR GARAGE



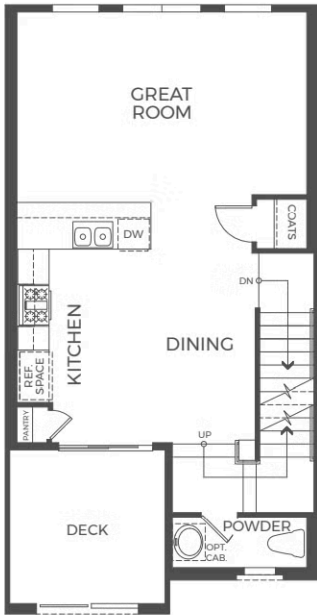
LAYOUT 2A

OR



LAYOUT 2B

OR



LAYOUT 2C



COVINABOWL.VIP.COM | Sales@TrumarkHomes.com | (626) 603-5417

TRUMARKHOMES

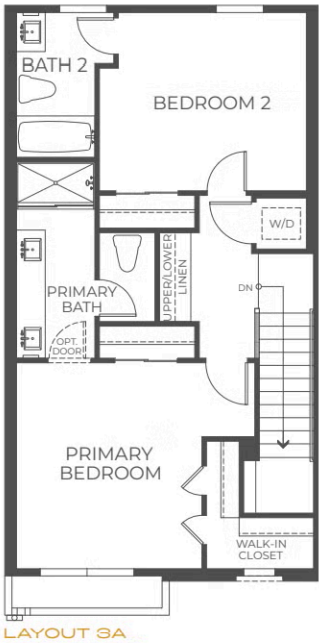
This is not an offer to sell but is intended for information only. The developer reserves the right to make modifications to materials, specifications, plans, pricing, various fees, designs scheduling and delivery of homes without prior notice. All dimensions and square footages are approximate. Plans and dimensions may contain minor variations from floor to floor. Homes shown do not represent actual homesites. CA DRE license #01877720. 

# Rows Plan 1 - A TruFlex Design

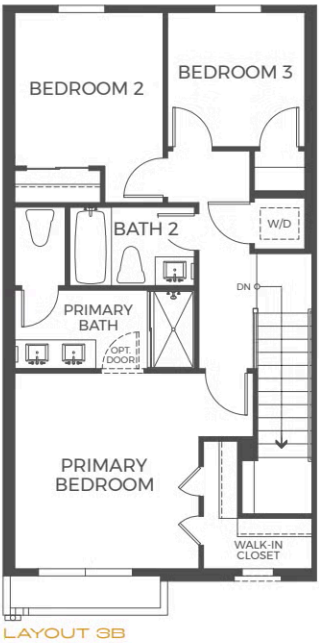
ROWS AT COVINA BOWL

## ROWS TRUFLEX PLAN 1 | FLOOR 3

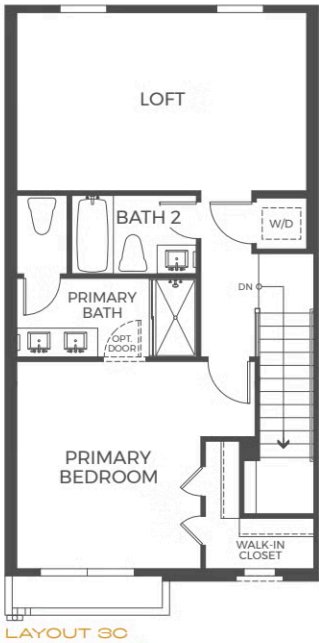
3-STORY | APPROX. 1,573 SQ. FT. | 1 - 4 BEDROOMS | 3.5 BATHROOMS | 2-CAR GARAGE



OR



OR



COVINABOWLVIP.COM | Sales@TrumarkHomes.com | (626) 603-5417

TRUMARKHOMES

This is not an offer to sell but is intended for information only. The developer reserves the right to make modifications to materials, specifications, plans, pricing, various fees, designs scheduling and delivery of homes without prior notice. All dimensions and square footages are approximate. Plans and dimensions may contain minor variations from floor to floor. Homes shown do not represent actual homesites. CA DRE license #01877720.