

# Plan 4

FLATS & TOWNS AT ZEST



PRICE  
**\$654,400**

## FEATURES

-  3 Bedrooms
-  3 Bathrooms
-  1,493 Sq. Ft.
-  2 Car Garage


Live that penthouse life with Plan 4's crave-worthy floor plan offering 1,493 sq. ft. of luxurious living space. Head upstairs to the main living area and find the expansive great room, contemporary kitchen, and dining area that leads out to a private deck. The gourmet kitchen is complete with a pantry and center preparation island with dual sinks that overlook the spacious great room. The kitchen includes full overlay, frameless flat panel contemporary maple cabinetry with knobs, granite slab kitchen countertops with your color choice of 6" backsplash, and GE stainless steel premium kitchen appliance package.

This floor also includes a primary suite and two secondary bedrooms with an ensuite bathroom and walk-in closet. The generously sized primary suite is complete with a stunning, spa-like bathroom with dual sinks and walk-in closet. This plan comes with your color choice of Welcoming tile at entry, kitchen, bathrooms and laundry, Kohler plumbing features, and much more!

# Plan 4

FLATS & TOWNS AT ZEST


## ZEST PLAN 4 FLOOR PLAN

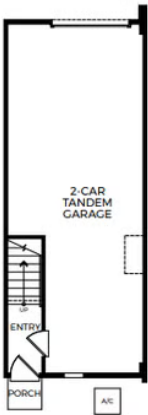


**FLATS & TOWNS - PLAN 4**

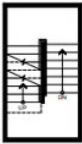
Three-Story | Approx. 1,493 Sq. Ft.  
3 Bedrooms | 3 Bathrooms  
2-Car Tandem Garage

PRELIMINARY

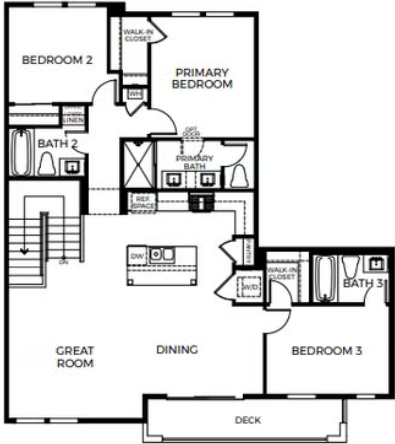




FIRST FLOOR



SECOND FLOOR



THIRD FLOOR