

Plan 3

FLATS & TOWNS AT ZEST



PRICE

\$627,965

FEATURES

-  1 Bedrooms
-  2 Bathrooms
-  1,092 Sq. Ft.
-  2 Car Garage

There's a lot to love with Plan 3's beautifully designed floor plan offering 1,092 sq. ft of living space. A first-floor office, adjacent to a two-car tandem garage, offers that coveted work-life balance thanks to its separation from the main floor. Head upstairs to the main living area and enjoy a bright, light-filled great room, multi-functional flex room, and gourmet kitchen. The kitchen includes full overlay, frameless flat panel contemporary maple cabinetry with knobs, granite slab kitchen countertops with your color choice of 6" backsplash, and GE stainless steel premium kitchen appliance package.

Down the hall is a generously sized primary bedroom suite complete with a stunning, spa-like bathroom. Outside, you'll find the deck – the perfect spot to savor your morning coffee. This plan comes with your color choice of Welcoming tile at entry, kitchen, bathrooms and laundry, Kohler plumbing features, and much more!

Plan 3

FLATS & TOWNS AT ZEST

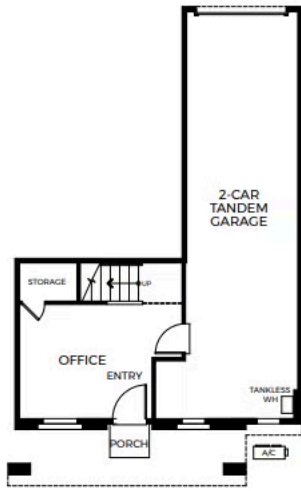
ZEST PLAN 3 FLOOR PLAN



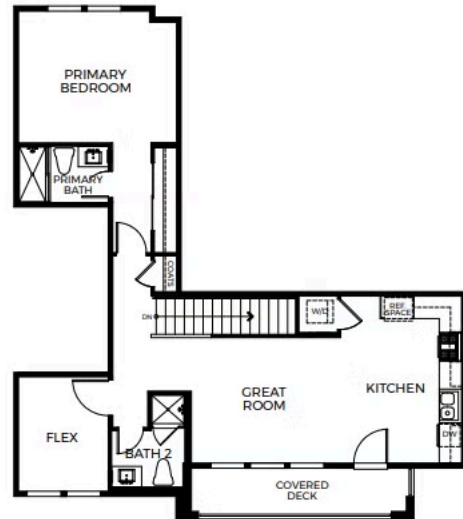
FLATS & TOWNS - PLAN 3

Two-Story | Approx. 1,092 Sq. Ft.
1 Bedroom + Office + Flex Room | 2 Bathrooms
2-Car Tandem Garage

PRELIMINARY



FIRST FLOOR



SECOND FLOOR