

447 Edna Place

COVINA, CA 91723

GET IN TOUCH
(925) 281-3227



PRICE
\$531,400

PLAN
Plan 2

LOCATION
Flats & Towns at Zest

FEATURES

-  1 Bedrooms
-  2.0 Bathrooms
-  935 Sq. Ft.
-  1 Car Garage

With 935 sq. ft. of thoughtfully planned living space, Plan 2 at Zest three-story end-unit floor plan is all about modern conveniences. Come home to a direct-access garage that leads upstairs to the main floor, where a spacious great room seamlessly flows into an open kitchen and multi-functional flex room. The kitchen includes full overlay, frameless flat panel contemporary maple cabinetry with knobs, granite slab kitchen countertops with your color choice of 6" backsplash, and GE stainless steel premium kitchen appliance package. Best of all, a third staircase elevates you to the primary bedroom – a private suite complete with an adjoining bathroom and generous walk-in closet. This plan comes with your color choice of Welcoming tile at entry, kitchen, bathrooms and laundry, Kohler plumbing features, and much more!

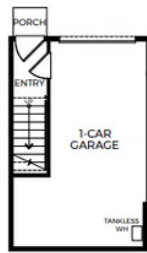
ZEST PLAN 2 FLOOR PLAN



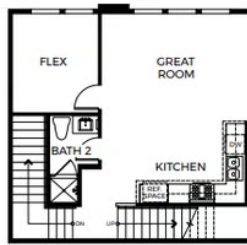
FLATS & TOWNS - PLAN 2

Three-Story | Approx. 935 Sq. Ft.
1 Bedroom + Flex Room | 2 Bathrooms | 1-Car Garage

PRELIMINARY



FIRST FLOOR



SECOND FLOOR



THIRD FLOOR