

5376 Hilltop Road

CASTRO VALLEY, CA 94546



PRICE

\$2,787,530

PLAN

Residence 2

LOCATION

Summit Collection

FEATURES

-  5 Bedrooms
-  4.5 Bathrooms
-  4,277 Sq. Ft.
-  3 Car Garage

Homesite 17 at Summit Collection by Trumark Homes offers approx. 4,277 Sq. Ft. of living space throughout two stories that will be move-in ready by August 2025! Key features include:

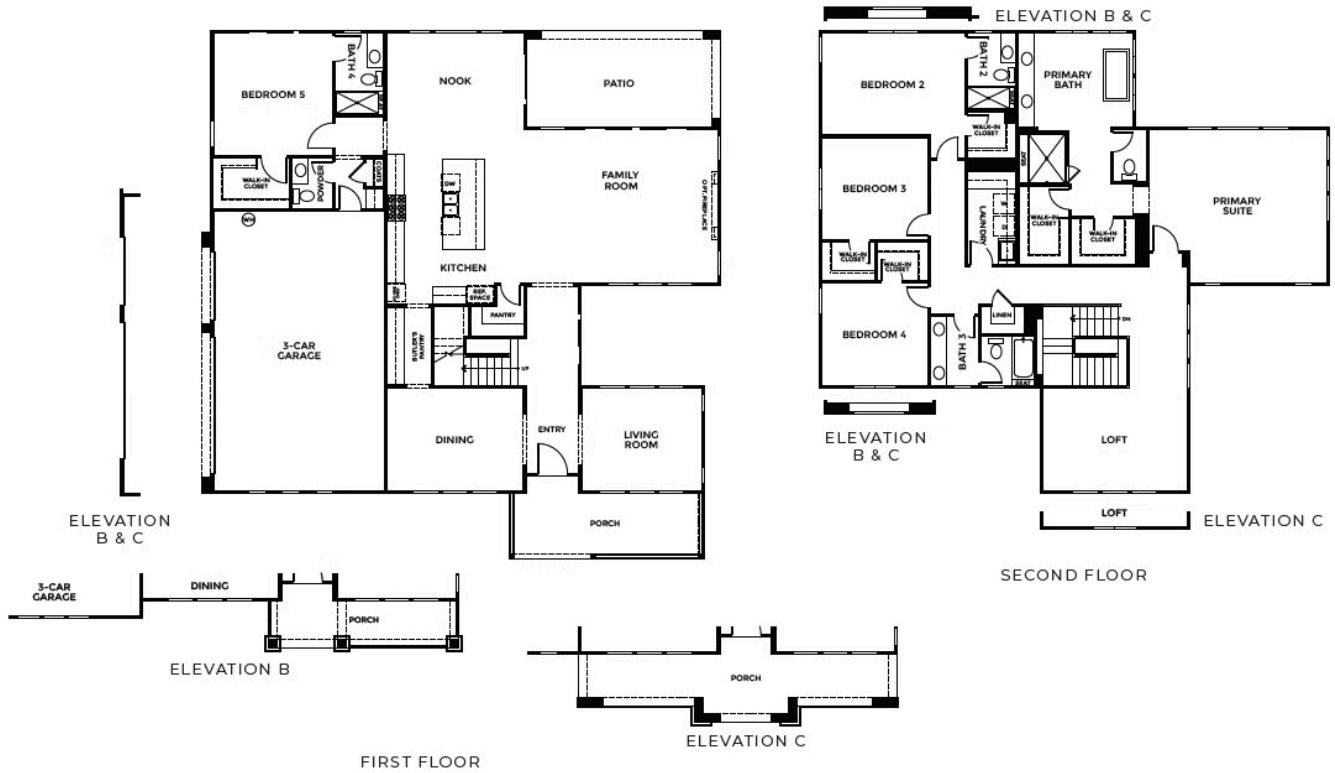
- Over \$12,000 in designer-selected upgrades
- Cabinetry, countertops, and flooring of your choosing!
- Bosch® stainless steel kitchen appliances
- \$10,000 flex credit that can be used towards special financing, design center credit, or closing costs when using one of our preferred lenders!

A large porch leads into a spacious entry with a dining and living room on each side. Head down the entryway and you'll find a family room with sliding glass doors that look out an unforgettable view, breakfast nook, and a gourmet kitchen. The kitchen includes a center preparation island overlooking the family room. The kitchen is complete with recessed-panel beech cabinetry with Euro drawer slides and soft close doors in your choice of three colors, Daltile® Quartz slab countertops with 6" backsplash and full-height backsplash at cooktop. The first floor features a bedroom, bathroom, and access to the home's three-car garage.

Upon the second floor, you will find the primary suite, complete with a spa-like bath with dual vanities, a walk-in shower, a standing tub, and a two spacious walk-in closets. The second story features a large loft area, laundry room, and three secondary bedrooms with two additional bathrooms. This home also includes luxury vinyl plank flooring at entry and kitchen in your choice of two colors, carpet in bedrooms, family room, and closets in your choice of three colors, Kohler plumbing features, electrical vehicle outlet at garage, energy-saving Low-E glass vinyl-framed windows throughout and much more!

5376 Hilltop Road

CASTRO VALLEY, CA 94546



5376 Hilltop Road

CASTRO VALLEY, CA 94546

GET IN TOUCH
(925) 281-3227



ELEVATION A, B & C FRONT LOAD GARAGE