

1862 Frost Drive

WINDSOR, CO 80550



PRICE

\$749,900

PLAN

Plan 2

LOCATION

Festival at RainDance

FEATURES

-  3 Bedrooms
-  2.5 Bathrooms
-  2,230 Sq. Ft.
-  2 Car Garage

Homesite 26, a Plan 2 at Festival at RainDance by Trumark Homes, is a contemporary single-story home offering 2,230 Sq. Ft. of living space with three bedrooms and two and a half baths. The home features an inviting porch with secondary bedrooms and office just through the entrance hall. Beyond is the gourmet kitchen featuring a spacious walk-in pantry and a center preparation island. This island includes dual sinks and overlooks the dining and great rooms, complete with an optional gas fireplace. The kitchen includes 42" deluxe white cabinetry, Quartz countertops with tile backsplash, Beko stainless steel appliance package with 5-burner gas cooktop, a convection oven, built-in microwave, and a dishwasher.

The great room with a contemporary fireplace opens up to the covered outdoor room. The primary suite, located just off the great room offers a stunning, spa-like bathroom with a free-standing tub, walk-in shower and an expansive walk-in closet. The home comes with 5" engineered wood flooring in the entry, kitchen, dining, and great room, spacious 10-foot ceilings on the main floor and 9' ceilings in the basement, insulated steel garage door, tankless water heater, and AC, and much more! Stop in today to find out more about this amazing home.

FESTIVAL PLAN 2 FLOOR PLAN

FESTIVAL • 50' LOTS
2,230 – 3,504 Sq. Ft. • 3 – 5 Bedrooms • 2.5 – 4.5 Baths

RESIDENCE 2



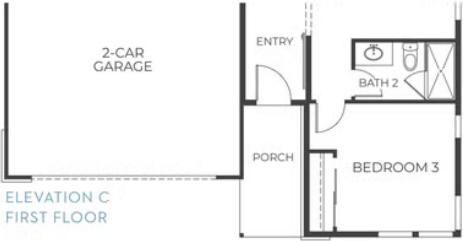
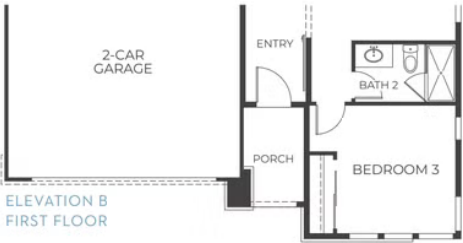
ELEVATION A – MODERN FARMHOUSE



ELEVATION B – MODERN PRAIRIE



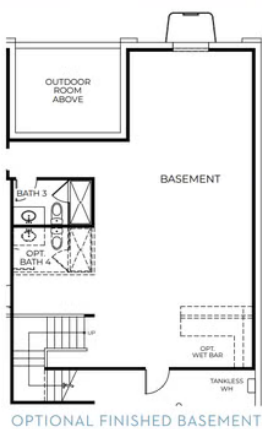
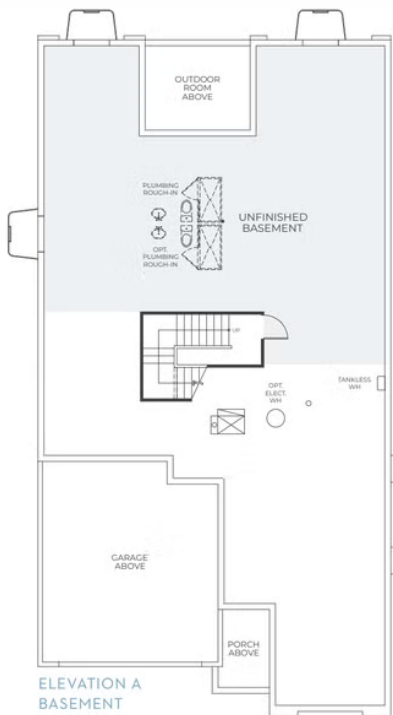
ELEVATION C – MODERN MOUNTAIN



FESTIVAL PLAN 2 FLOOR PLAN

FESTIVAL • 50' LOTS
2,230 - 3,504 Sq. Ft. • 3 - 5 Bedrooms • 2.5 - 4.5 Baths

RESIDENCE 2



FESTIVAL PLAN 2 FLOOR PLAN

FESTIVAL • 50' LOTS

2,230 – 3,504 Sq. Ft. • 3 – 5 Bedrooms • 2.5 – 4.5 Baths

RESIDENCE 2

