

# Plan 3

SADDLEBACK PLACE



PRICE  
**\$815,900**

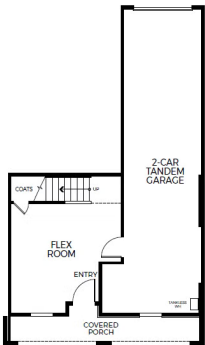
## FEATURES

-  1 Bedrooms
-  2 Bathrooms
-  1,217 Sq. Ft.
-  2 Car Garage

There's a lot to love with Plan 3's beautifully designed floor plan offering 1,217 sq. ft of living space. A first-floor office, adjacent to a two-car tandem garage, offers that coveted work-life balance thanks to its separation from the main floor. Head upstairs to the main living area and enjoy a bright, light-filled great room, multi-functional flex room, and gourmet kitchen. Down the hall is a generously sized primary bedroom suite complete with a stunning, spa-like bathroom. Outside, you'll find the deck – the perfect spot to savor your morning coffee.

# Plan 3

SADDLEBACK PLACE



Plan 3

SADDLEBACK PLACE

GET IN TOUCH  
(925) 281-3227

